

Integrin beta 1/ITGB1 Antibody (APC), Mouse MAb



Sino Biological
Biological Solution Specialist

Catalog Number: 10587-MM06-A

GENERAL INFORMATION

Immunogen:	Recombinant Human Integrin beta 1/ITGB1 Protein (Catalog#10587-H08H1)
Reagents:	APC-conjugated Mouse monoclonal antibody
Preparation	This antibody was produced from a hybridoma resulting from the fusion of a mouse myeloma with B cells obtained from a mouse immunized with purified, recombinant Human Integrin beta 1/ITGB1 (rh Integrin beta 1/ITGB1; Catalog#10587-H08H1; CAA30790.1; Met1-Asp728) and conjugated with APC under optimum conditions, the unreacted APC was removed.
Ig Type:	Mouse IgG1
Clone ID:	06
Specificity:	Human Integrin beta 1/ITGB1
Concentration:	5 µl/Test, 0.1 mg/ml
Formulation:	Aqueous solution containing 0.5% BSA and 0.03%ProClin300
Storage:	This antibody is stable for 12 months from date of receipt when stored at 2°C-8°C. Protected from prolonged exposure to light. Do not freeze! Sodium azide is toxic to cells and should be disposed of properly. Flush with large volumes of water during disposal.

APPLICATIONS

Applications:	FCM
----------------------	-----

RECOMMENDED CONCENTRATION

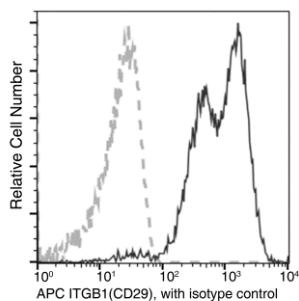
Please Note: Optimal concentrations/dilutions should be determined by the end user.

Integrin beta 1/ITGB1 Antibody (APC), Mouse MAb



Sino Biological
Biological Solution Specialist

Catalog Number: 10587-MM06-A



Flow cytometric analysis of Human ITGB1(CD29) expression on human whole blood lymphocytes. Cells were stained with APC-conjugated anti-Human ITGB1(CD29). The fluorescence histograms were derived from gated events with the forward and side light-scatter characteristics of viable lymphocytes.

Flow cytometry was performed on a BD FACSCalibur flow cytometry system. Please refer to www.sinobiological.com/Flow-Cytometry-FACS-Protocols-a-750.html for technical protocols.