

# Nrf2/NFE2L2 Antibody, Rabbit PAb, Antigen Affinity Purified



Sino Biological  
Biological Solution Specialist

Catalog Number: 106022-T32

## GENERAL INFORMATION

<b>Immunogen:</b>	A synthetic peptide corresponding to the center region of the Human Nrf2/NFE2L2
<b>Preparation</b>	Produced in rabbits immunized with a synthetic peptide corresponding to the center region of the Human Nrf2/NFE2L2, and purified by antigen affinity chromatography.
<b>Ig Type:</b>	Rabbit IgG
<b>Specificity:</b>	Human Nrf2/NFE2L2
<b>Formulation:</b>	PBS, pH7.0 with 0.03% Proclin300
<b>Storage:</b>	This antibody can be stored at 2°C-8°C for one month without detectable loss of activity. Antibody products are stable for twelve months from date of receipt when stored at -20°C to -80°C. Avoid repeated freeze-thaw cycles.

## APPLICATIONS

<b>Applications:</b>	WB
----------------------	----

## RECOMMENDED CONCENTRATION

<b>Western Blot</b>	WB: 1:500-1:2000
---------------------	------------------

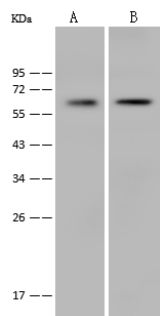
***Please Note: Optimal concentrations/dilutions should be determined by the end user.***

# Nrf2/NFE2L2 Antibody, Rabbit PAb, Antigen Affinity Purified



Sino Biological  
Biological Solution Specialist

Catalog Number: 106022-T32



Anti-NFE2L2 rabbit polyclonal antibody at  
1:500 dilution

Lane A: HepG2 Whole Cell Lysate

Lane B: Jurkat Whole Cell Lysate

Lysates/proteins at 30 µg per lane.

Secondary

Goat Anti-Rabbit IgG (H+L)/HRP at 1/10000  
dilution.

Developed using the ECL technique.

Performed under reducing conditions.

Predicted band size: 68 kDa

Observed band size: 68 kDa