

TIMP-1 Antibody, Rabbit PAb, Antigen Affinity Purified



Sino Biological
Biological Solution Specialist

Catalog Number: 106164-T40

GENERAL INFORMATION

Immunogen:	A synthetic peptide corresponding to the center region of the Mouse TIMP-1
Preparation	Produced in rabbits immunized with a synthetic peptide corresponding to the center region of the Mouse TIMP-1, and purified by antigen affinity chromatography.
Ig Type:	Rabbit IgG
Specificity:	Mouse TIMP-1
Formulation:	0.2 µm filtered solution in PBS
Storage:	This antibody can be stored at 2°C-8°C for one month without detectable loss of activity. Antibody products are stable for twelve months from date of receipt when stored at -20°C to -80°C. Preservative-Free. Sodium azide is recommended to avoid contamination (final concentration 0.05%-0.1%). It is toxic to cells and should be disposed of properly. Avoid repeated freeze-thaw cycles.

APPLICATIONS

Applications:	WB, IHC-P
----------------------	-----------

RECOMMENDED CONCENTRATION

IHC-P	IHC-P: 1:500-1:2000
Western Blot	WB: 1:500-1:2000

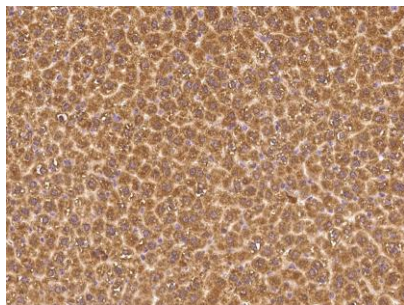
Please Note: Optimal concentrations/dilutions should be determined by the end user.

TIMP-1 Antibody, Rabbit PAb, Antigen Affinity Purified

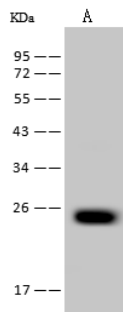


Sino Biological
Biological Solution Specialist

Catalog Number: 106164-T40



Immunohistochemical staining of mouse TIMP1 in mouse liver with rabbit polyclonal antibody at 1:1000 dilution, formalin-fixed paraffin embedded sections.



Anti-TIMP1 rabbit polyclonal antibody at 1:500 dilution

Lane A: Mouse kidney tissue lysate

Lysates/proteins at 30 µg per lane.

Secondary

Goat Anti-Rabbit IgG (H+L)/HRP at 1/10000 dilution.

Developed using the ECL technique.
Performed under reducing conditions.

Predicted band size: 23 kDa

Observed band size: 25 kDa