

EphB4/Eph Receptor B4 Antibody, Rabbit PAb, Antigen Affinity Purified



Sino Biological
Biological Solution Specialist

Catalog Number: 106504-T08

GENERAL INFORMATION

Immunogen:	A synthetic peptide corresponding to the center region of the Mouse EphB4/Eph Receptor B4
Preparation	Produced in rabbits immunized with a synthetic peptide corresponding to the center region of the Mouse EphB4/Eph Receptor B4, and purified by antigen affinity chromatography.
Ig Type:	Rabbit IgG
Specificity:	Mouse EphB4/Eph Receptor B4
Formulation:	0.2 µm filtered solution in PBS
Storage:	This antibody can be stored at 2°C-8°C for one month without detectable loss of activity. Antibody products are stable for twelve months from date of receipt when stored at -20°C to -80°C. Preservative-Free. Sodium azide is recommended to avoid contamination (final concentration 0.05%-0.1%). It is toxic to cells and should be disposed of properly. Avoid repeated freeze-thaw cycles.

APPLICATIONS

Applications:	IHC-P
---------------	-------

RECOMMENDED CONCENTRATION

IHC-P	IHC-P: 1:200-1:1000
-------	---------------------

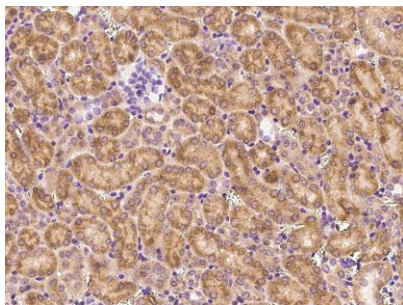
Please Note: Optimal concentrations/dilutions should be determined by the end user.

EphB4/Eph Receptor B4 Antibody, Rabbit PAb, Antigen Affinity Purified



Sino Biological
Biological Solution Specialist

Catalog Number: 106504-T08



Immunohistochemical staining of mouse EphB4 in mouse kidney with rabbit polyclonal antibody at 1:500 dilution, formalin-fixed paraffin embedded sections.