

GFRA3 Antibody, Rabbit PAb, Antigen Affinity Purified



Sino Biological
Biological Solution Specialist

Catalog Number: 106718-T08

GENERAL INFORMATION

Immunogen:	A synthetic peptide corresponding to the center region of the Mouse GFRA3
Preparation	Produced in rabbits immunized with a synthetic peptide corresponding to the center region of the Mouse GFRA3, and purified by antigen affinity chromatography.
Ig Type:	Rabbit IgG
Specificity:	Mouse, Rat Human, Bovin (Species predicted to react based on 100% sequence homology)
Formulation:	0.2 µm filtered solution in PBS
Storage:	This antibody can be stored at 2°C-8°C for one month without detectable loss of activity. Antibody products are stable for twelve months from date of receipt when stored at -20°C to -80°C. Preservative-Free. Sodium azide is recommended to avoid contamination (final concentration 0.05%-0.1%). It is toxic to cells and should be disposed of properly. Avoid repeated freeze-thaw cycles.

APPLICATIONS

Applications:	IHC-P
---------------	-------

RECOMMENDED CONCENTRATION

IHC-P	IHC-P: 1:200-1:1000
-------	---------------------

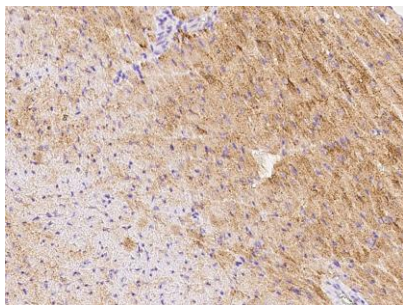
Please Note: Optimal concentrations/dilutions should be determined by the end user.

GFRA3 Antibody, Rabbit PAb, Antigen Affinity Purified

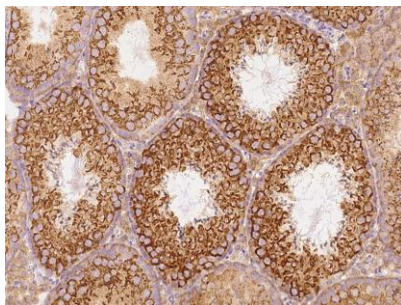
Catalog Number: 106718-T08



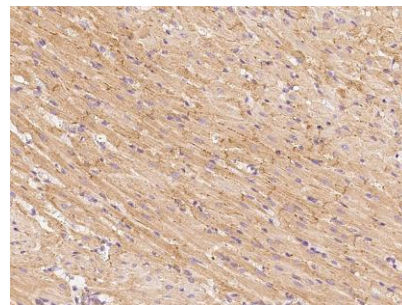
Sino Biological
Biological Solution Specialist



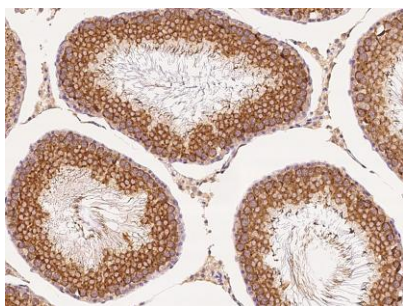
Immunohistochemical staining GFRA3 in mouse heart with rabbit polyclonal antibody at 1:500 dilution, formalin-fixed paraffin embedded sections.



Immunohistochemical staining GFRA3 in mouse testis with rabbit polyclonal antibody at 1:500 dilution, formalin-fixed paraffin embedded sections.



Immunohistochemical staining GFRA3 in rat heart with rabbit polyclonal antibody at 1:500 dilution, formalin-fixed paraffin embedded sections.



Immunohistochemical staining GFRA3 in rat testis with rabbit polyclonal antibody at 1:500 dilution, formalin-fixed paraffin embedded sections.