

# Leptin Receptor/LEPR Antibody, Rabbit PAb, Antigen Affinity Purified



Sino Biological  
Biological Solution Specialist

Catalog Number: 106907-T40

## GENERAL INFORMATION

<b>Immunogen:</b>	A synthetic peptide corresponding to the center region of the Mouse Leptin Receptor/LEPR
<b>Preparation</b>	Produced in rabbits immunized with a synthetic peptide corresponding to the center region of the Mouse Leptin Receptor/LEPR, and purified by antigen affinity chromatography.
<b>Ig Type:</b>	Rabbit IgG
<b>Specificity:</b>	Mouse Leptin Receptor/LEPR
<b>Formulation:</b>	PBS, pH7.0 with 0.03% Proclin300
<b>Storage:</b>	This antibody can be stored at 2°C-8°C for one month without detectable loss of activity. Antibody products are stable for twelve months from date of receipt when stored at -20°C to -80°C. Avoid repeated freeze-thaw cycles.

## APPLICATIONS

<b>Applications:</b>	WB,IHC-P
----------------------	----------

## RECOMMENDED CONCENTRATION

<b>IHC-P</b>	IHC-P: 1:200-1:1000
<b>Western Blot</b>	WB: 1:500-1:2000

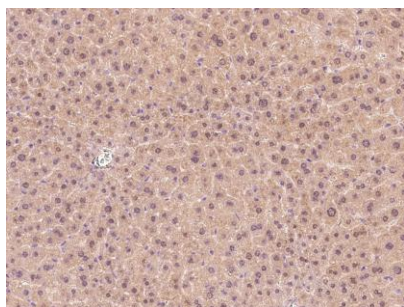
**Please Note:** Optimal concentrations/dilutions should be determined by the end user.

# Leptin Receptor/LEPR Antibody, Rabbit PAb, Antigen Affinity Purified

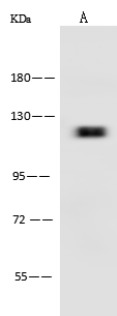


Sino Biological  
Biological Solution Specialist

Catalog Number: 106907-T40



Immunohistochemical staining of mouse LEPR in mouse liver with rabbit polyclonal antibody at 1:300 dilution, formalin-fixed paraffin embedded sections.



Anti-LEPR rabbit polyclonal antibody at 1:500 dilution

Lane A: Mouse brain tissue lysate

Lysates/proteins at 30 µg per lane.

Secondary

Goat Anti-Rabbit IgG (H+L)/HRP at 1/10000 dilution.

Developed using the ECL technique.  
Performed under reducing conditions.

Predicted band size: 132 kDa

Observed band size: 125 kDa