

EpCAM / TROP-1 / TACSTD1 Antibody, Mouse MAb



Sino Biological
Biological Solution Specialist

Catalog Number: 10694-MM06

GENERAL INFORMATION

Immunogen:	Recombinant Human EpCAM / TROP-1 / TACSTD1 protein (Catalog#10694-H08H)
Preparation	This antibody was produced from a hybridoma resulting from the fusion of a mouse myeloma with B cells obtained from a mouse immunized with purified, recombinant Human EpCAM / TROP-1 / TACSTD1 (rh EpCAM / TROP-1 / TACSTD1; Catalog#10694-H08H; NP_002345.1; Met1-Lys265). The IgG fraction of the cell culture supernatant was purified by Protein A affinity chromatography.
Ig Type:	Mouse IgG1
Clone ID:	06
Specificity:	Human EpCAM / TROP-1 / TACSTD1
Formulation:	0.2 µm filtered solution in PBS
Storage:	This antibody can be stored at 2°C-8°C for one month without detectable loss of activity. Antibody products are stable for twelve months from date of receipt when stored at -20°C to -80°C. Preservative-Free. Sodium azide is recommended to avoid contamination (final concentration 0.05%-0.1%). It is toxic to cells and should be disposed of properly. Avoid repeated freeze-thaw cycles.

APPLICATIONS

Applications:	FCM
---------------	-----

RECOMMENDED CONCENTRATION

Flow Cytometry	FCM: 1:25-1:100
----------------	-----------------

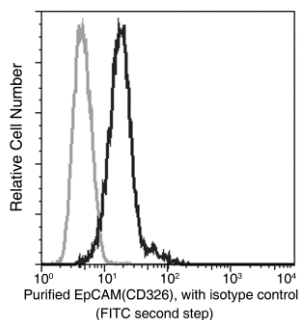
Please Note: Optimal concentrations/dilutions should be determined by the end user.

EpCAM / TROP-1 / TACSTD1 Antibody, Mouse MAb



Sino Biological
Biological Solution Specialist

Catalog Number: 10694-MM06



Flow cytometric analysis of Human EpCAM(CD326) expression on SKBR3 cells. Cells were stained with purified anti-Human EpCAM(CD326), then a FITC-conjugated second step antibody. The histogram were derived from gated events with the forward and side light-scatter characteristics of intact cells.

Flow cytometry was performed on a BD FACSCalibur flow cytometry system. Please refer to www.sinobiological.com/Flow-Cytometry-FACS-Protocols-a-750.html for technical protocols.