

EpCAM / TROP-1 / TACSTD1 Antibody, Rabbit MAb



Sino Biological
Biological Solution Specialist

Catalog Number: 10694-R028

EliteRmab® is a registered trademark of Sino Biological Inc.

GENERAL INFORMATION	
Immunogen:	Recombinant Human EpCAM protein (Catalog#10694-H08H)
Preparation	This antibody was obtained from a rabbit immunized with purified, recombinant Human EpCAM / TROP1 (rh EpCAM; Catalog#10694-H08H; NP_002345.1; Met 1-Lys 265).
Ig Type:	Rabbit IgG
Clone ID:	28
Specificity:	Human EpCAM / TROP1 / CD326
	No cross-reactivity in ELISA with Human CD146 / MCAM Human CD171 / N-CAML1 / L1CAM Human OBCAM / OPCML Human TROP2 / TACSTD2
Formulation:	0.2 µm filtered solution in PBS
Storage:	This antibody can be stored at 2°C-8°C for one month without detectable loss of activity. Antibody products are stable for twelve months from date of receipt when stored at -20°C to -80°C. Preservative-Free. Avoid repeated freeze-thaw cycles.
Alternative Names:	DIAR5,EGP-2,EGP314,EGP40,ESA,HNPCC8,KS1/4,KSA,M4S1,MIC18,MK-1,TACSTD1,TROP-1,TROP1
APPLICATIONS	
Applications:	WB,ELISA,ELISA(Det),IHC-P,FCM,ICC/IF,IP
RECOMMENDED CONCENTRATION	
IHC-P	IHC-P: 1:1000-1:5000
ICC/IF	ICC/IF: 1:250-1:5000
Flow Cytometry	FCM: 1:100-1:500
Western Blot	WB: 1:500-1:1000
Immunoprecipitation	IP: 0.2-1 µL/mg of lysate
ELISA	ELISA: 1:25000-1:50000 This antibody can be used at 1:25000-1:50000 with the appropriate secondary reagents to detect Human EpCAM.
Sandwich ELISA (Detection Ab)	ELISA(Det): 1:5000-1:50000 This antibody will detect Human EpCAM / TROP-1 / TACSTD1 in ELISA pair set (Catalog: # SEK10694). In a sandwich ELISA, it can be used as detection antibody when paired with (Catalog: # 10694-MM07).

Please Note: Optimal concentrations/dilutions should be determined by the end user.

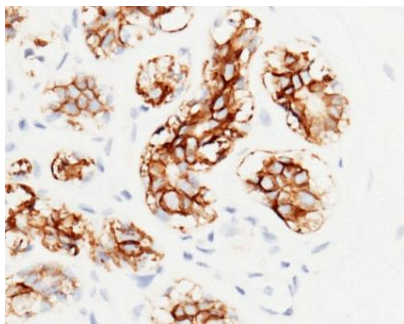
EpCAM / TROP-1 / TACSTD1 Antibody, Rabbit MAb

Catalog Number: 10694-R028

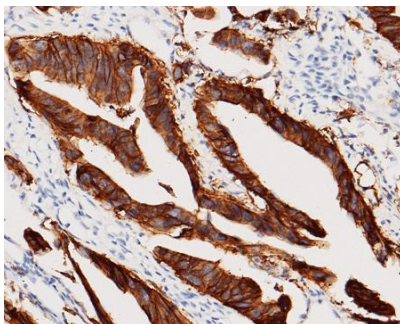


Sino Biological
Biological Solution Specialist

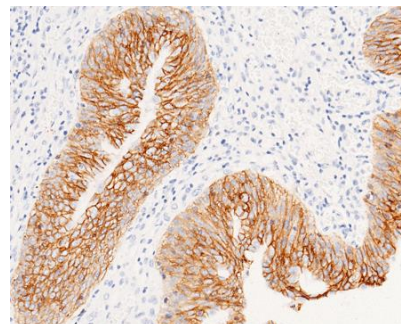
EliteRmab® is a registered trademark of Sino Biological Inc.



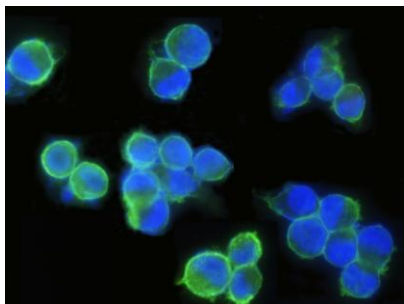
Immunohistochemical staining of human EpCAM in human mammary gland with rabbit monoclonal antibody at 1:2500 dilution, formalin-fixed paraffin embedded sections. Positive staining was localized to membrane of alveolus epithelium.



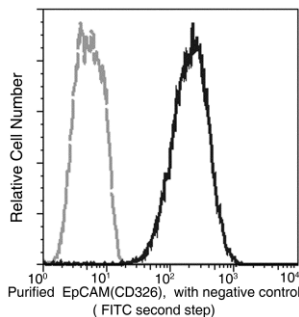
Immunohistochemical staining of human EpCAM in human colon carcinoma with rabbit monoclonal antibody at 1:2500 dilution, formalin-fixed paraffin embedded sections. Positive staining was localized to membrane of colonic gland epithelium.



Immunohistochemical staining of human EpCAM in human bladder carcinoma with rabbit monoclonal antibody at 1:2500 dilution, formalin-fixed paraffin embedded sections. Positive staining was localized to membrane of transitional epithelium.

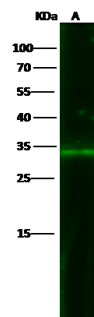


Immunofluorescence staining of Human EpCAM in SKBR3 cells. Cells were fixed with 4% PFA, blocked with 10% serum, and incubated with Rabbit anti-Human EpCAM monoclonal antibody (1:500) at 4°C overnight. Then cells were stained with the Alexa Fluor® 488-conjugated Goat Anti-rabbit IgG secondary antibody (green) and counterstained with DAPI (blue). Positive staining was localized to plasma membrane.



Flow cytometric analysis of anti-EpCAM (CD326) reactivity on SKBR3 cells. SKBR3 cells were stained with anti-EpCAM (CD326) Monoclonal Ab (10694-R028), then a FITC-conjugated second step antibody. The histogram were derived from the gated events based on light scattering characteristics of viable cells.

Flow cytometry was performed on a BD FACSCalibur flow cytometry system. Please refer to www.sinobiological.com/Flow-Cytometry-FACS-Protocols-a-750.html for technical protocols.



Anti-EpCAM rabbit monoclonal antibody at 1:500 dilution

Lane A: MCF-7 Whole Cell Lysate

Lysates/proteins at 30 µg per lane.

Secondary
Goat Anti-Rabbit IgG H&L (Dylight800) at 1/10000 dilution.

Developed using the Odyssey technique.
Performed under reducing conditions.

Predicted band size:34 kDa
Observed band size:38 kDa

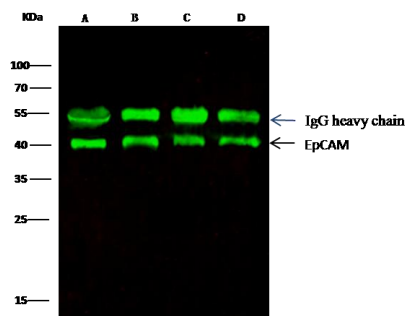
EpCAM / TROP-1 / TACSTD1 Antibody, Rabbit MAb

Catalog Number: 10694-R028



Sino Biological
Biological Solution Specialist

EliteRmab® is a registered trademark of Sino Biological Inc.



EpCAM was immunoprecipitated using:
Lane A: 0.5 mg MCF-7 Whole Cell Lysate
Lane B: 0.5 mg A431 Whole Cell Lysate
Lane C: 0.5 mg HepG2 Whole Cell Lysate
Lane D: 0.5 mg Caco-2 Whole Cell Lysate

0.5 μ L anti-EpCAM rabbit monoclonal antibody
and 15 μ L of 50 % Protein G agarose.

Primary antibody:
Anti-EpCAM rabbit monoclonal antibody, at
1:5000 dilution

Secondary antibody:
Dylight 800-labeled antibody to rabbit IgG
(H+L), at 1:5000 dilution

Developed using the odssey technique.
Performed under reducing conditions.

Predicted band size: 40 kDa
Observed band size: 40 kDa