

Desmin/DES Antibody, Rabbit PAb, Antigen Affinity Purified



Sino Biological
Biological Solution Specialist

Catalog Number: 106974-T08

GENERAL INFORMATION

Immunogen:	A synthetic peptide corresponding to the C-terminus of the Human Desmin/DES
Preparation	Produced in rabbits immunized with a synthetic peptide corresponding to the C-terminus of the Human Desmin/DES, and purified by antigen affinity chromatography.
Ig Type:	Rabbit IgG
Specificity:	Human Mouse, Rat, Bovin, Pig (Species predicted to react based on 100% sequence homology)
Formulation:	0.2 µm filtered solution in PBS
Storage:	This antibody can be stored at 2°C-8°C for one month without detectable loss of activity. Antibody products are stable for twelve months from date of receipt when stored at -20°C to -80°C. Preservative-Free. Avoid repeated freeze-thaw cycles.

APPLICATIONS

Applications:	IHC-P
---------------	-------

RECOMMENDED CONCENTRATION

IHC-P	IHC-P: 1:1000-1:10000
-------	-----------------------

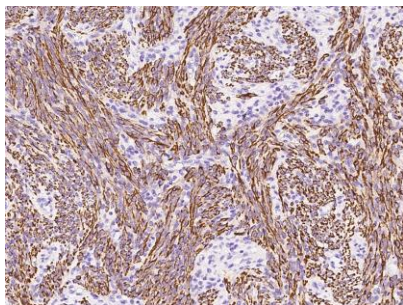
Please Note: Optimal concentrations/dilutions should be determined by the end user.

Desmin/DES Antibody, Rabbit PAb, Antigen Affinity Purified

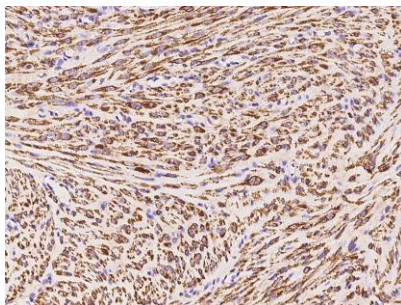
Catalog Number: 106974-T08



Sino Biological
Biological Solution Specialist



Immunohistochemical staining of human DES in human corpus uteri with rabbit polyclonal antibody at 1:5000 dilution, formalin-fixed paraffin embedded sections.



Immunohistochemical staining of human DES in human leiomyoma with rabbit polyclonal antibody at 1:5000 dilution, formalin-fixed paraffin embedded sections.