

CD116 / GM-CSFR Antibody, Rabbit MAb



Sino Biological
Biological Solution Specialist

Catalog Number: 10701-R009

EliteRmab® is a registered trademark of Sino Biological Inc.

GENERAL INFORMATION	
Immunogen:	Recombinant Human CD116 / GM-CSFR protein (Catalog#10701-H08H)
Preparation	This antibody was obtained from a rabbit immunized with purified, recombinant Human CD116 / GM-CSFR (rh CD116 / GM-CSFR; Catalog#10701-H08H; P15509-1; Met1-Gly320).
Ig Type:	Rabbit IgG
Clone ID:	009
Specificity:	Human CD116 / GM-CSFR
Formulation:	0.2 µm filtered solution in PBS
Storage:	This antibody can be stored at 2°C-8°C for one month without detectable loss of activity. Antibody products are stable for twelve months from date of receipt when stored at -20°C to -80°C. Preservative-Free. Sodium azide is recommended to avoid contamination (final concentration 0.05%-0.1%). It is toxic to cells and should be disposed of properly. Avoid repeated freeze-thaw cycles.
APPLICATIONS	
Applications:	ELISA, FCM
RECOMMENDED CONCENTRATION	
Flow Cytometry	FCM: 1:25-1:100
ELISA	ELISA: 1:5000-1:10000 This antibody can be used at 1:5000-1:10000 with the appropriate secondary reagents to detect Human CD116 / GM-CSFR.

Please Note: Optimal concentrations/dilutions should be determined by the end user.

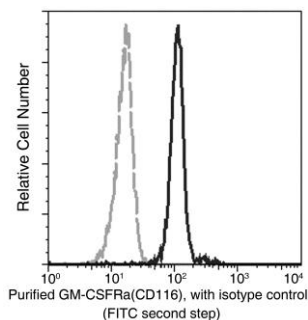
CD116 / GM-CSFR Antibody, Rabbit MAb

Catalog Number: 10701-R009



Sino Biological
Biological Solution Specialist

EliteRmab® is a registered trademark of Sino Biological Inc.



Flow cytometric analysis of Human GM-CSFRα(CD116) expression on human peripheral blood monocytes. Cells were stained with purified anti-Human GM-CSFRα(CD116), then a FITC-conjugated second step antibody. The histogram were derived from gated events with the forward and side light-scatter characteristics of viable monocytes.

Flow cytometry was performed on a BD FACSCalibur flow cytometry system. Please refer to www.sinobiological.com/Flow-Cytometry-FACS-Protocols-a-750.html for technical protocols.