

# P2RY6 Antibody, Rabbit PAb, Antigen Affinity Purified



Sino Biological  
Biological Solution Specialist

Catalog Number: 107142-T44

## GENERAL INFORMATION

<b>Immunogen:</b>	A synthetic peptide corresponding to the center region of the Human P2RY6
<b>Preparation</b>	Produced in rabbits immunized with a synthetic peptide corresponding to the center region of the Human P2RY6, and purified by antigen affinity chromatography.
<b>Ig Type:</b>	Rabbit IgG
<b>Specificity:</b>	Human P2RY6
<b>Formulation:</b>	0.2 µm filtered solution in PBS
<b>Storage:</b>	This antibody can be stored at 2°C-8°C for one month without detectable loss of activity. Antibody products are stable for twelve months from date of receipt when stored at -20°C to -80°C. Preservative-Free. Sodium azide is recommended to avoid contamination (final concentration 0.05%-0.1%). It is toxic to cells and should be disposed of properly. Avoid repeated freeze-thaw cycles.

## APPLICATIONS

<b>Applications:</b>	WB, IHC-P, IP
----------------------	---------------

## RECOMMENDED CONCENTRATION

<b>IHC-P</b>	IHC-P: 1:500-1:2000
<b>Western Blot</b>	WB: 1:500-1:2000
<b>Immunoprecipitation</b>	IP: 5-10 µL/mg of lysate

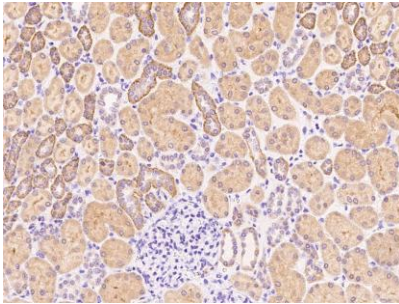
**Please Note:** Optimal concentrations/dilutions should be determined by the end user.

# P2RY6 Antibody, Rabbit PAb, Antigen Affinity Purified

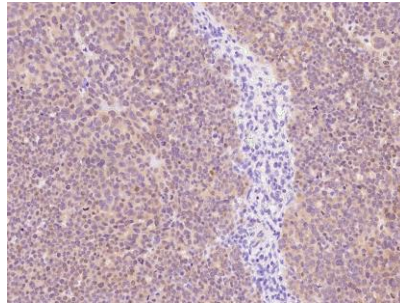


Sino Biological  
Biological Solution Specialist

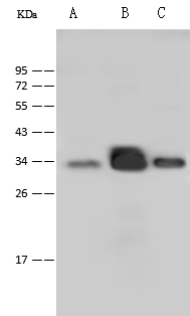
Catalog Number: 107142-T44



Immunohistochemical staining of human P2RY6 in human kidney with rabbit polyclonal antibody at 1:1000 dilution, formalin-fixed paraffin embedded sections.



Immunohistochemical staining of human P2RY6 in human ovarian cancer with rabbit polyclonal antibody at 1:1000 dilution, formalin-fixed paraffin embedded sections.

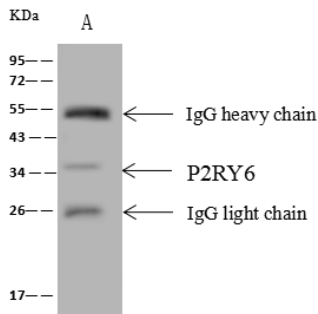


Anti-P2RY6 rabbit polyclonal antibody at 1:500 dilution  
Lane A: A549 Whole Cell Lysate  
Lane B: 293 Whole Cell Lysate  
Lane C: HepG2 Whole Cell Lysate

Lysates/proteins at 30 µg per lane.  
Secondary  
Goat Anti-Rabbit IgG (H+L)/HRP at 1/10000 dilution.

Developed using the ECL technique.  
Performed under reducing conditions.

Predicted band size: 36 kDa  
Observed band size: 36 kDa



P2RY6 was immunoprecipitated using:  
Lane A: 0.5 mg HepG2 Whole Cell Lysate

4 µL anti-P2RY6 rabbit polyclonal antibody  
and 60 µg of Immunomagnetic beads Protein A/G.

Primary antibody:  
Anti-P2RY6 rabbit polyclonal antibody, at 1:100 dilution

Secondary antibody:  
Goat Anti-Rabbit IgG (H+L)/HRP at 1/10000 dilution

Developed using the ECL technique.  
Performed under reducing conditions.

Predicted band size: 36 kDa  
Observed band size: 35 kDa