

**Isovaleryl-CoA dehydrogenase / IVD**  
**Antibody, Rabbit PAb, Antigen**  
**Affinity Purified**

Catalog Number: 107220-T08



Sino Biological  
Biological Solution Specialist

GENERAL INFORMATION	
Immunogen:	A synthetic peptide corresponding to the center region of the Human Isovaleryl-CoA dehydrogenase / IVD
Preparation	Produced in rabbits immunized with a synthetic peptide corresponding to the center region of the Human Isovaleryl-CoA dehydrogenase / IVD, and purified by antigen affinity chromatography.
Ig Type:	Rabbit IgG
Specificity:	Human Pongo abelii (Species predicted to react based on 100% sequence homology)
Formulation:	0.2 µm filtered solution in PBS
Storage:	This antibody can be stored at 2°C-8°C for one month without detectable loss of activity. Antibody products are stable for twelve months from date of receipt when stored at -20°C to -80°C. Preservative-Free. Sodium azide is recommended to avoid contamination (final concentration 0.05%-0.1%). It is toxic to cells and should be disposed of properly. Avoid repeated freeze-thaw cycles.
APPLICATIONS	
Applications:	IHC-P
RECOMMENDED CONCENTRATION	
IHC-P	IHC-P: 1:500-1:2000

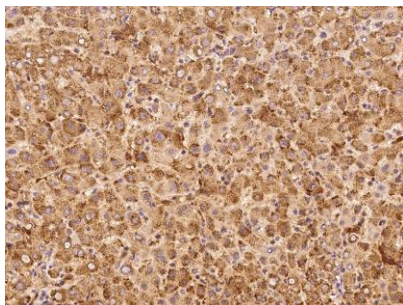
***Please Note: Optimal concentrations/dilutions should be determined by the end user.***

**Isovaleryl-CoA dehydrogenase / IVD  
Antibody, Rabbit PAb, Antigen  
Affinity Purified**

Catalog Number: 107220-T08



Sino Biological  
Biological Solution Specialist



Immunohistochemical staining of human IVD in human liver with rabbit polyclonal antibody at 1:1000 dilution, formalin-fixed paraffin embedded sections.