

# CAV2/Caveolin-2 Antibody, Rabbit PAb, Antigen Affinity Purified



Sino Biological  
Biological Solution Specialist

Catalog Number: 107444-T36

## GENERAL INFORMATION

<b>Immunogen:</b>	A synthetic peptide corresponding to the center region of the Mouse CAV2/Caveolin-2
<b>Preparation</b>	Produced in rabbits immunized with a synthetic peptide corresponding to the center region of the Mouse CAV2/Caveolin-2, and purified by antigen affinity chromatography.
<b>Ig Type:</b>	Rabbit IgG
<b>Specificity:</b>	Mouse CAV2/Caveolin-2
<b>Formulation:</b>	0.2 µm filtered solution in PBS
<b>Storage:</b>	This antibody can be stored at 2°C-8°C for one month without detectable loss of activity. Antibody products are stable for twelve months from date of receipt when stored at -20°C to -80°C. Preservative-Free. Sodium azide is recommended to avoid contamination (final concentration 0.05%-0.1%). It is toxic to cells and should be disposed of properly. Avoid repeated freeze-thaw cycles.

## APPLICATIONS

<b>Applications:</b>	WB, IP
----------------------	--------

## RECOMMENDED CONCENTRATION

<b>Western Blot</b>	WB: 1:1000-1:5000
<b>Immunoprecipitation</b>	IP: 5-10 µL/mg of lysate

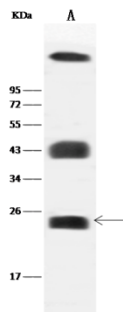
**Please Note:** Optimal concentrations/dilutions should be determined by the end user.

# CAV2/Caveolin-2 Antibody, Rabbit PAb, Antigen Affinity Purified



Sino Biological  
Biological Solution Specialist

Catalog Number: 107444-T36



Anti-CAV2 rabbit polyclonal antibody at 1:1000 dilution

Lane A: Mouse lung tissue lysate

Lysates/proteins at 30 µg per lane.

Secondary

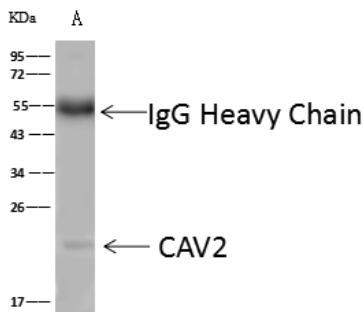
Goat Anti-Rabbit IgG (H+L)/HRP at 1/10000 dilution.

Developed using the ECL technique.  
Performed under reducing conditions.

Predicted band size: 18 kDa

Observed band size: 24 kDa

(We are unsure as to the identity of these extra bands.)



CAV2 was immunoprecipitated using:

Lane A: 0.5 mg Mouse lung tissue lysate

4 µL anti-CAV2 rabbit polyclonal antibody and  
60 µg of Immunomagnetic beads Protein A/G.

Primary antibody:

Anti-CAV2 rabbit polyclonal antibody, at 1:100 dilution

Secondary antibody:

Goat Anti-Rabbit IgG (H+L)/HRP at 1/10000 dilution

Developed using the ECL technique.  
Performed under reducing conditions.

Predicted band size: 18 kDa

Observed band size: 22 kDa