

# C1QTNF6/CTRP6 Antibody, Rabbit PAb, Antigen Affinity Purified



Sino Biological  
Biological Solution Specialist

Catalog Number: 107663-T32

## GENERAL INFORMATION

<b>Immunogen:</b>	A synthetic peptide corresponding to the center region of the Human C1QTNF6/CTRP6
<b>Preparation</b>	Produced in rabbits immunized with a synthetic peptide corresponding to the center region of the Human C1QTNF6/CTRP6, and purified by antigen affinity chromatography.
<b>Ig Type:</b>	Rabbit IgG
<b>Specificity:</b>	Human C1QTNF6/CTRP6
<b>Formulation:</b>	PBS, pH7.0 with 0.03% Proclin300
<b>Storage:</b>	This antibody can be stored at 2°C-8°C for one month without detectable loss of activity. Antibody products are stable for twelve months from date of receipt when stored at -20°C to -80°C. Avoid repeated freeze-thaw cycles.

## APPLICATIONS

<b>Applications:</b>	WB
----------------------	----

## RECOMMENDED CONCENTRATION

<b>Western Blot</b>	WB: 1:500-1:2000
---------------------	------------------

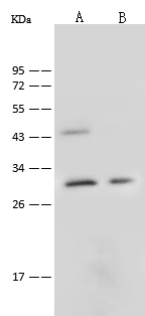
**Please Note:** Optimal concentrations/dilutions should be determined by the end user.

# C1QTNF6/CTRP6 Antibody, Rabbit PAb, Antigen Affinity Purified



Sino Biological  
Biological Solution Specialist

Catalog Number: 107663-T32



Anti-C1QTNF6 rabbit polyclonal antibody at 1:500 dilution

Lane A: Hela Whole Cell Lysate

Lane B: HepG2 Whole Cell Lysate

Lysates/proteins at 30 µg per lane.

Secondary

Goat Anti-Rabbit IgG (H+L)/HRP at 1/10000 dilution.

Developed using the ECL technique.

Performed under reducing conditions.

Predicted band size: 29 kDa

Observed band size: 29 kDa