

ASAM / CLMP Antibody (PE), Mouse MAb



Sino Biological
Biological Solution Specialist

Catalog Number: 10794-MM05-P

GENERAL INFORMATION

Immunogen:	Recombinant Human ASAM / CLMP Protein (Catalog#10794-H08H)
Reagents:	PE-conjugated Mouse monoclonal antibody
Preparation	This antibody was produced from a hybridoma resulting from the fusion of a mouse myeloma with B cells obtained from a mouse immunized with purified, recombinant Human ASAM / CLMP (rh ASAM / CLMP; Catalog#10794-H08H; NP_079045.1; Met1-Met233) and conjugated with PE under optimum conditions, the unreacted PE was removed.
Ig Type:	Mouse IgG1
Clone ID:	05
Specificity:	Human ASAM / CLMP
Concentration:	10 µl/Test, 0.1 mg/ml
Formulation:	PBS solution containing 0.5% BSA and 0.09% sodium azide
Storage:	This antibody can be stored at 2°C-8°C for twelve months without detectable loss of activity. Protected from prolonged exposure to light. Do not freeze ! Sodium azide is toxic to cells and should be disposed of properly. Flush with large volumes of water during disposal.
Alternative Names:	CLMP

APPLICATIONS

Applications:	FCM
----------------------	-----

RECOMMENDED CONCENTRATION

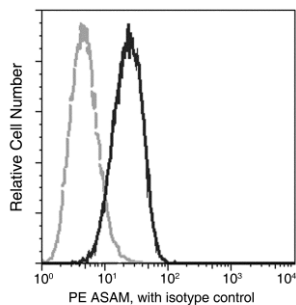
Please Note: Optimal concentrations/dilutions should be determined by the end user.

ASAM / CLMP Antibody (PE), Mouse MAb



Sino Biological
Biological Solution Specialist

Catalog Number: 10794-MM05-P



Flow cytometric analysis of Human ASAM expression on T98G cells. Cells were stained with purified anti-Human ASAM, then a FITC-conjugated second step antibody. The fluorescence histograms were derived from gated events with the forward and side light-scatter characteristics of intact cells.

Flow cytometry was performed on a BD FACSCalibur flow cytometry system. Please refer to www.sinobiological.com/Flow-Cytometry-FACS-Protocols-a-750.html for technical protocols.