

# Human TGFB1 (LAP) / TGF-beta 1 Protein (His Tag)

Catalog Number: 10804-H08H1



Sino Biological  
Biological Solution Specialist

## General Information

### Gene Name Synonym:

CED; DPD1; LAP; TGF-beta 1; TGFB; TGFbeta

### Protein Construction:

A DNA sequence encoding the Latency-associated peptide(LAP)of human TGFB1(Met1-Arg278) was expressed with a polyhistidine tag at the C-terminus.

**Source:** Human

**Expression Host:** HEK293 Cells

## QC Testing

**Purity:** > 95 % as determined by SDS-PAGE.

### Endotoxin:

< 1.0 EU per µg protein as determined by the LAL method.

### Stability:

Samples are stable for up to twelve months from date of receipt at -70 °C

**Predicted N terminal:** Leu 30

### Molecular Mass:

The recombinant Latency-associated peptide(LAP)of human TGFB1 consists of 260 amino acids and predicts a molecular mass of 29.9 kDa.

### Formulation:

Lyophilized from sterile PBS, pH 7.4.

Normally 5 % - 8 % trehalose, mannitol and 0.01% Tween80 are added as protectants before lyophilization. Specific concentrations are included in the hardcopy of COA. Please contact us for any concerns or special requirements.

## Usage Guide

### Storage:

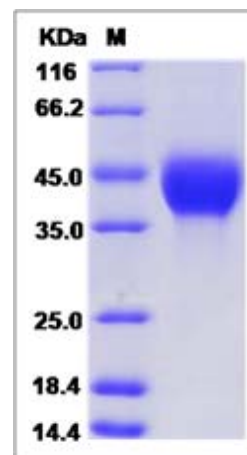
Store it under sterile conditions at -20°C to -80°C upon receiving. Recommend to aliquot the protein into smaller quantities for optimal storage.

**Avoid repeated freeze-thaw cycles.**

### Reconstitution:

Detailed reconstitution instructions are sent along with the products.

## SDS-PAGE:



## Protein Description

TGF-beta 1 is a member of the transforming growth factor beta (TGF-beta) family. The transforming growth factor-beta family of polypeptides are involved in the regulation of cellular processes, including cell division, differentiation, motility, adhesion and death. TGF-beta 1 positively and negatively regulates many other growth factors. It inhibits the secretion and activity of many other cytokines including interferon-γ, tumor necrosis factor-alpha and various interleukins. It can also decrease the expression levels of cytokine receptors. Meanwhile, TGF-beta 1 also increases the expression of certain cytokines in T cells and promotes their proliferation, particularly if the cells are immature. TGF-beta 1 also inhibits proliferation and stimulates apoptosis of B cells, and plays a role in controlling the expression of antibody, transferrin and MHC class II proteins on immature and mature B cells. As for myeloid cells, TGF-beta 1 can inhibit their proliferation and prevent their production of reactive oxygen and nitrogen intermediates. However, as with other cell types, TGF-beta 1 also has the opposite effect on cells of myeloid origin. TGF-beta 1 is a multifunctional protein that controls proliferation, differentiation and other functions in many cell types. It plays an important role in bone remodeling as it is a potent stimulator of osteoblastic bone formation, causing chemotaxis, proliferation and differentiation in committed osteoblasts. Once cells lose their sensitivity to TGF-beta1-mediated growth inhibition, autocrine TGF-beta signaling can promote tumorigenesis. Elevated levels of TGF-beta1 are often observed in advanced carcinomas, and have been correlated with increased tumor invasiveness and disease progression.

## References

- 1.Ghadami M, *et al.* (2000) Genetic Mapping of the Camurati-Engelmann Disease Locus to Chromosome 19q13.1-q13.3. *Am J Hum. Genet.* 66(1):143-7.
- 2.Letterio J, *et al.* (1998) Regulation of immune responses by TGF-beta. *Annu Rev Immunol.* 16:137-61.
- 3.Vaughn SP, *et al.* (2000) Confirmation of the mapping of the Camurati-Engelmann locus to 19q13. 2 and refinement to a 3.2-cM region. *Genomics.* 66(1):119-21.

Manufactured By Sino Biological Inc., FOR RESEARCH USE ONLY. NOT FOR USE IN HUMANS.

For US Customer: Fax: 267-657-0217 ● Tel: 215-583-7898

Global Customer: Fax :+86-10-5862-8288 ● Tel:+86-400-890-9989 ● <http://www.sinobiological.com>