

CD10/Neprilysin/MME Antibody, Rabbit PAb, Antigen Affinity Purified



Sino Biological
Biological Solution Specialist

Catalog Number: 10805-T56

GENERAL INFORMATION

Immunogen:	Recombinant Human CD10/Neprilysin/MME Protein (Catalog#10805-H07H)
Preparation	Produced in rabbits immunized with purified, recombinant Human CD10/Neprilysin/MME (rh CD10/Neprilysin/MME; Catalog#10805-H07H; NP_000893.2; Tyr52-Trp750). CD10/Neprilysin/MME specific IgG was purified by Human CD10/Neprilysin/MME affinity chromatography.
Ig Type:	Rabbit IgG
Specificity:	Human CD10/Neprilysin/MME
Formulation:	0.2 µm filtered solution in PBS
Storage:	This antibody can be stored at 2°C-8°C for one month without detectable loss of activity. Antibody products are stable for twelve months from date of receipt when stored at -20°C to -80°C. Preservative-Free. Sodium azide is recommended to avoid contamination (final concentration 0.05%-0.1%). It is toxic to cells and should be disposed of properly. Avoid repeated freeze-thaw cycles.

APPLICATIONS

Applications:	WB,ELISA,IHC-P
----------------------	----------------

RECOMMENDED CONCENTRATION

IHC-P	IHC-P: 1:1000-1:5000
Western Blot	WB: 1:500-1:2000
ELISA	ELISA: 1:5000-1:10000 This antibody can be used at 1:5000-1:10000 with the appropriate secondary reagents to detect Human CD10/Neprilysin/MME.

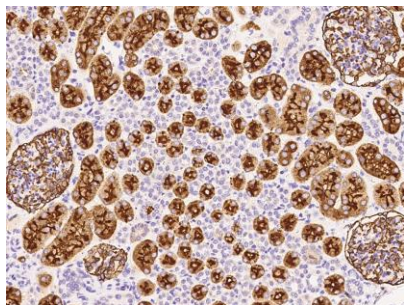
Please Note: Optimal concentrations/dilutions should be determined by the end user.

CD10/Neprilysin/MME Antibody, Rabbit PAb, Antigen Affinity Purified

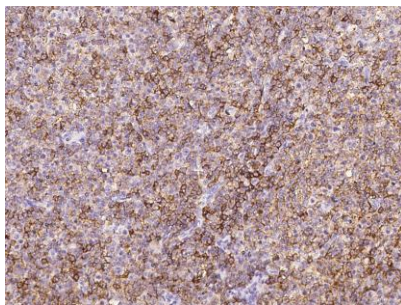
Catalog Number: 10805-T56



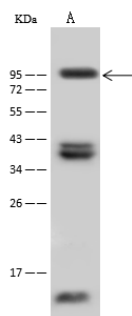
Sino Biological
Biological Solution Specialist



Immunohistochemical staining of human MME in human kidney with rabbit polyclonal antibody at 1:3000 dilution, formalin-fixed paraffin embedded sections.



Immunohistochemical staining of human MME in human lymphoma with rabbit polyclonal antibody at 1:3000 dilution, formalin-fixed paraffin embedded sections.



Anti-MME rabbit polyclonal antibody at 1:500 dilution

Lane A: Raji Whole Cell Lysate

Lysates/proteins at 30 µg per lane.

Secondary

Goat Anti-Rabbit IgG (H+L)/HRP at 1/10000 dilution.

Developed using the ECL technique.

Performed under reducing conditions.

Predicted band size: 85 kDa

Observed band size: 96 kDa