

# CD21 Antibody (FITC), Mouse MAb



Sino Biological  
Biological Solution Specialist

Catalog Number: 10811-MM02-F

## GENERAL INFORMATION

<b>Immunogen:</b>	Recombinant Human CD21 Protein (Catalog#10811-H08H)
<b>Reagents:</b>	FITC-conjugated Mouse monoclonal antibody
<b>Preparation</b>	This antibody was produced from a hybridoma resulting from the fusion of a mouse myeloma with B cells obtained from a mouse immunized with purified, recombinant Human CD21 (rh CD21; Catalog#10811-H08H; P20023-1; Met1-Arg971) and conjugated with FITC under optimum conditions, the unreacted FITC was removed.
<b>Ig Type:</b>	Mouse IgG1
<b>Clone ID:</b>	02
<b>Specificity:</b>	Human CD21
<b>Concentration:</b>	5 µl/Test, 0.1 mg/ml
<b>Formulation:</b>	PBS solution containing 0.5% BSA and 0.09% sodium azide
<b>Storage:</b>	This antibody can be stored at 2°C-8°C for twelve months without detectable loss of activity. Protected from prolonged exposure to light. Do not freeze ! Sodium azide is toxic to cells and should be disposed of properly. Flush with large volumes of water during disposal.
<b>Alternative Names:</b>	CR2

## APPLICATIONS

<b>Applications:</b>	FCM
----------------------	-----

## RECOMMENDED CONCENTRATION

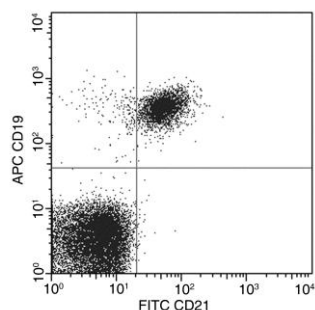
*Please Note: Optimal concentrations/dilutions should be determined by the end user.*

# CD21 Antibody (FITC), Mouse MAb



Sino Biological  
Biological Solution Specialist

Catalog Number: 10811-MM02-F



Flow cytometric analysis of Human CD21 expression on human whole blood lymphocytes. Cells were stained with FITC-conjugated anti-Human CD21 and APC-conjugated anti-Human CD19. The dot plots were derived from gated events with the forward and side light-scatter characteristics of viable lymphocytes.

Flow cytometry was performed on a BD FACSCalibur flow cytometry system. Please refer to [www.sinobiological.com/Flow-Cytometry-FACS-Protocols-a-750.html](http://www.sinobiological.com/Flow-Cytometry-FACS-Protocols-a-750.html) for technical protocols.

**For Research Use Only. Not for use in diagnostic or therapeutic procedures.**

**Tel: +86-400-890-9989 (Global), +1-215-583-7898 (USA), +49(0)6196 9678656 (Europe)**

**Website: <http://www.sinobiological.com>**