

# PSMA2 Antibody, Rabbit PAb, Antigen Affinity Purified



Sino Biological  
Biological Solution Specialist

Catalog Number: 108164-T44

## GENERAL INFORMATION

<b>Immunogen:</b>	A synthetic peptide corresponding to the center region of the Human PSMA2
<b>Preparation</b>	Produced in rabbits immunized with a synthetic peptide corresponding to the center region of the Human PSMA2, and purified by antigen affinity chromatography.
<b>Ig Type:</b>	Rabbit IgG
<b>Specificity:</b>	Human PSMA2
<b>Formulation:</b>	PBS, pH7.0 with 0.03% Proclin300
<b>Storage:</b>	This antibody can be stored at 2°C-8°C for one month without detectable loss of activity. Antibody products are stable for twelve months from date of receipt when stored at -20°C to -80°C. Avoid repeated freeze-thaw cycles.

## APPLICATIONS

<b>Applications:</b>	WB,IHC-P,IP
----------------------	-------------

## RECOMMENDED CONCENTRATION

<b>IHC-P</b>	IHC-P: 1:500-1:2000
<b>Western Blot</b>	WB: 1:1000-1:5000
<b>Immunoprecipitation</b>	IP:5-10 µL/mg of lysate

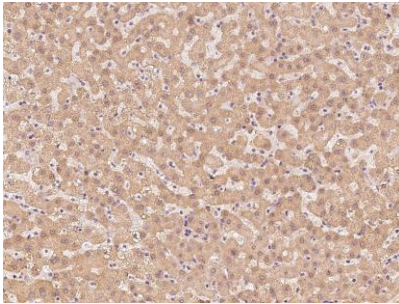
**Please Note: Optimal concentrations/dilutions should be determined by the end user.**

# PSMA2 Antibody, Rabbit PAb, Antigen Affinity Purified

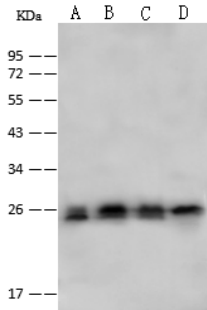


Sino Biological  
Biological Solution Specialist

Catalog Number: 108164-T44



Immunohistochemical staining of human PSMA2 in human liver with rabbit polyclonal antibody at 1:1000 dilution, formalin-fixed paraffin embedded sections.



Anti-PSMA2 rabbit polyclonal antibody at 1:500 dilution

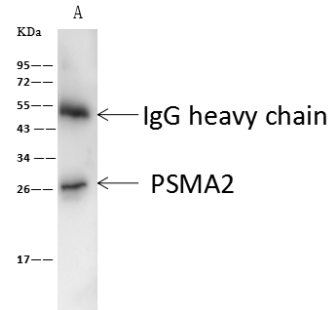
Lane A: H1299 Whole Cell Lysate  
Lane B: HepG2 Whole Cell Lysate  
Lane C: 293T Whole Cell Lysate  
Lane D: Jurkat Whole Cell Lysate

Lysates/proteins at 30 µg per lane.

Secondary  
Goat Anti-Rabbit IgG (H+L)/HRP at 1/10000 dilution.

Developed using the ECL technique.  
Performed under reducing conditions.

Predicted band size: 25 kDa  
Observed band size: 25 kDa



PSMA2 was immunoprecipitated using:  
Lane A: 0.5 mg HeLa Whole Cell Lysate

4 µL anti-PSMA2 rabbit polyclonal antibody and 60 µg of Immunomagnetic beads Protein A/G.

Primary antibody:  
Anti-PSMA2 rabbit polyclonal antibody, at 1:100 dilution

Secondary antibody:  
Goat Anti-Rabbit IgG (H+L)/HRP at 1/10000 dilution

Developed using the ECL technique.  
Performed under reducing conditions.

Predicted band size: 26 kDa  
Observed band size: 26 kDa