

CD38/ADPRC1 Antibody (PerCP), Mouse MAb



Sino Biological
Biological Solution Specialist

Catalog Number: 10818-MM27-C

GENERAL INFORMATION	
Immunogen:	Recombinant Human CD38/ADPRC1 Protein (Catalog#10818-H08H)
Reagents:	PerCP-conjugated Mouse monoclonal antibody
Preparation	This antibody was produced from a hybridoma resulting from the fusion of a mouse myeloma with B cells obtained from a mouse immunized with purified, recombinant Human CD38/ADPRC1 (rh CD38/ADPRC1; Catalog#10818-H08H; NP_001766.2; Val43-Ile300) and conjugated with PerCP under optimum conditions, the unreacted PerCP was removed.
Ig Type:	Mouse IgG1
Clone ID:	27
Specificity:	Human CD38/ADPRC1
Concentration:	5 µl/Test, 0.1 mg/ml
Formulation:	Aqueous solution containing 0.5% BSA and 0.09% sodium azide
Storage:	This antibody is stable for 12 months from date of receipt when stored at 2°C-8°C. Protected from prolonged exposure to light. Do not freeze! Sodium azide is toxic to cells and should be disposed of properly. Flush with large volumes of water during disposal.
APPLICATIONS	
Applications:	FCM
RECOMMENDED CONCENTRATION	

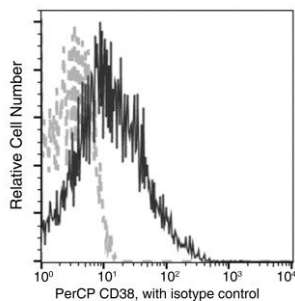
Please Note: Optimal concentrations/dilutions should be determined by the end user.

CD38/ADPRC1 Antibody (PerCP), Mouse MAb



Sino Biological
Biological Solution Specialist

Catalog Number: 10818-MM27-C



Flow cytometric analysis of Human CD38 expression on human whole blood lymphocytes. Cells were stained with PerCP-conjugated anti-Human CD38. The fluorescence histograms were derived from gated events with the forward and side light-scatter characteristics of viable lymphocytes.

Flow cytometry was performed on a BD FACSCalibur flow cytometry system. Please refer to www.sinobiological.com/Flow-Cytometry-FACS-Protocols-a-750.html for technical protocols.