

Human CEACAM6 / CD66c Protein (His Tag)

Catalog Number: 10823-H08H



Sino Biological
Biological Solution Specialist

General Information

Gene Name Synonym:

CD66c; CEA; CEAL; NCA

Protein Construction:

A DNA sequence encoding the human CEACAM6 (NP_002474.3) (Met 1-Gly 320) with a C-terminal polyhistidine tag was expressed.

Source: Human

Expression Host: HEK293 Cells

QC Testing

Purity: > 95 % as determined by SDS-PAGE

Bio Activity:

1. Measured by its binding ability in a functional ELISA. 2. Immobilized human CEACAM6-his (Cat:10823-H08H) at 10 µg/mL (100 µl/well) can bind biotinylated human CEACAM8-his. The EC₅₀ of biotinylated human CEACAM8-his is 0.17 µg/mL.

Endotoxin:

< 1.0 EU per µg of the protein as determined by the LAL method

Stability:

Samples are stable for up to twelve months from date of receipt at -70 °C

Predicted N terminal: Lys 35

Molecular Mass:

The secreted recombinant human CEACAM6 comprises 297 amino acids with a predicted molecular mass of 32.6 kDa. As a result of glycosylation, rh CEACAM6 migrates as an approximately 45-55 kDa band in SDS-PAGE under reducing conditions.

Formulation:

Lyophilized from sterile PBS, pH 7.4

Normally 5 % - 8 % trehalose, mannitol and 0.01% Tween80 are added as protectants before lyophilization. Specific concentrations are included in the hardcopy of COA. Please contact us for any concerns or special requirements.

Usage Guide

Storage:

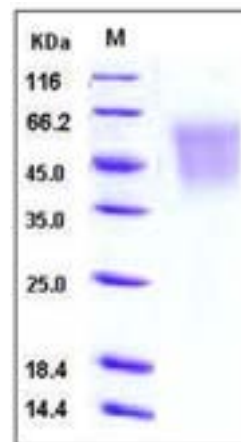
Store it under sterile conditions at -20°C to -80°C upon receiving. Recommend to aliquot the protein into smaller quantities for optimal storage.

Avoid repeated freeze-thaw cycles.

Reconstitution:

Detailed reconstitution instructions are sent along with the products.

SDS-PAGE:



Protein Description

Carcinoembryonic antigen-related cell adhesion molecule 6 (CEACAM6), also known as nonspecific crossreacting antigen (NCA) and CD66c, is one of seven human CEACAM family members within the immunoglobulin superfamily. It is a glycosylphosphatidylinositol-linked immunoglobulin superfamily member that is overexpressed in a variety of human cancers, including colon, breast and lung and is associated with tumorigenesis, tumour cell adhesion, invasion and metastasis. CEACAM6 is a unique mediator of migration and invasion of drug resistant oestrogen-deprived breast cancer cells, and this protein could be an important biomarker of metastasis. CEACAM6 is expressed by granulocytes and their progenitors. It is also expressed by epithelia of various organs and is upregulated in pancreatic and colon adenocarcinomas, as well as hyperplastic polyps. Resistance to adhesion-related apoptosis in tumor cells is conferred in the condition of CEACAM6 overexpression.

Manufactured By Sino Biological Inc., FOR RESEARCH USE ONLY. NOT FOR USE IN HUMANS.

For US Customer: Fax: 267-657-0217 • Tel: 215-583-7898

Global Customer: Fax :+86-10-5862-8288 • Tel:+86-400-890-9989 • <http://www.sinobiological.com>