

RHOG Antibody, Rabbit PAb, Antigen Affinity Purified



Sino Biological
Biological Solution Specialist

Catalog Number: 108264-T32

GENERAL INFORMATION

| | |
|--------------|---|
| Immunogen: | A synthetic peptide corresponding to the center region of the Human RHOG |
| Preparation | Produced in rabbits immunized with a synthetic peptide corresponding to the center region of the Human RHOG, and purified by antigen affinity chromatography. |
| Ig Type: | Rabbit IgG |
| Specificity: | Human Cricetus cricetus, Mouse (Species predicted to react based on 100% sequence homology) |
| Formulation: | PBS, pH7.0 with 0.03% Proclin300 |
| Storage: | This antibody can be stored at 2°C-8°C for one month without detectable loss of activity. Antibody products are stable for twelve months from date of receipt when stored at -20°C to -80°C. Avoid repeated freeze-thaw cycles. |

APPLICATIONS

| | |
|---------------|----|
| Applications: | WB |
|---------------|----|

RECOMMENDED CONCENTRATION

| | |
|--------------|------------------|
| Western Blot | WB: 1:500-1:2000 |
|--------------|------------------|

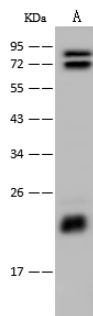
Please Note: Optimal concentrations/dilutions should be determined by the end user.

RHOG Antibody, Rabbit PAb, Antigen Affinity Purified



Sino Biological
Biological Solution Specialist

Catalog Number: 108264-T32



Anti-RHOG rabbit polyclonal antibody at 1:500 dilution

Lane A: Jurkat Whole Cell Lysate

Lysates/proteins at 30 µg per lane.

Secondary

Goat Anti-Rabbit IgG (H+L)/HRP at 1/10000 dilution.

Developed using the ECL technique.

Performed under reducing conditions.

Predicted band size: 21 kDa

Observed band size: 21 kDa