

# P4HB / ERBA2L Antibody, Mouse MAb



Sino Biological  
Biological Solution Specialist

Catalog Number: 10827-MM08

GENERAL INFORMATION	
Immunogen:	Recombinant Human P4HB protein (Catalog#10827-H08H)
Preparation	This antibody was produced from a hybridoma resulting from the fusion of a mouse myeloma with B cells obtained from a mouse immunized with purified, recombinant Human P4HB / ERBA2L (rh P4HB; Catalog#10827-H08H; NP_000909.2; Met 1-Lys 505). The IgG fraction of the cell culture supernatant was purified by Protein A affinity chromatography.
Ig Type:	Mouse IgG1
Clone ID:	2F6G12H2
Specificity:	Human P4HB / ERBA2L
Formulation:	0.2 µm filtered solution in PBS
Storage:	This antibody can be stored at 2°C-8°C for one month without detectable loss of activity. Antibody products are stable for twelve months from date of receipt when stored at -20°C to -80°C. Preservative-Free. Avoid repeated freeze-thaw cycles.
APPLICATIONS	
Applications:	ELISA,ELISA(Det),IHC-P
RECOMMENDED CONCENTRATION	
IHC-P	IHC-P: 1:20-1:80
ELISA	ELISA: 1:1000-1:2000 This antibody can be used at 1:1000-1:2000 with the appropriate secondary reagents to detect Human P4HB.
Sandwich ELISA (Detection Ab)	ELISA(Det): 1:1000-1:10000 This antibody will detect Human P4HB in ELISA pair set (Catalog: # SEK10827). In a sandwich ELISA, it can be used as detection antibody when paired with (Catalog: # 10827-MM12).

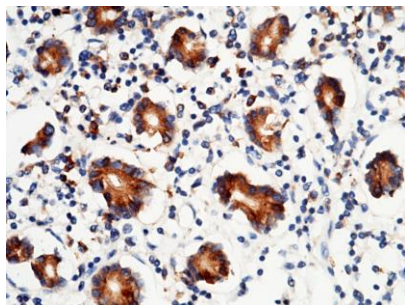
**Please Note: Optimal concentrations/dilutions should be determined by the end user.**

# P4HB / ERBA2L Antibody, Mouse MAb

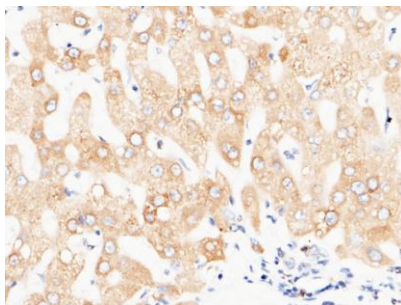


Sino Biological  
Biological Solution Specialist

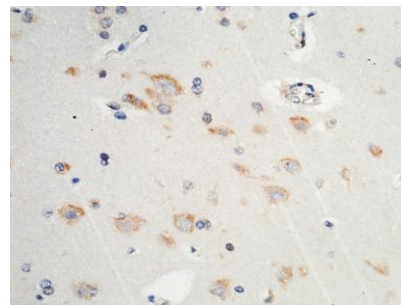
Catalog Number: 10827-MM08



Immunohistochemical staining of human P4HB in human small intestine with mouse monoclonal antibody (1:30, formalin-fixed paraffin embedded sections).



Immunohistochemical staining of human P4HB in human liver with mouse monoclonal antibody (1:30, formalin-fixed paraffin embedded sections).



Immunohistochemical staining of human P4HB in human brain with mouse monoclonal antibody (1:30, formalin-fixed paraffin embedded sections).