

Human CD150 / SLAM / SLAMF1 Protein (His Tag)

Catalog Number: 10837-H08H



Sino Biological
Biological Solution Specialist

General Information

Gene Name Synonym:

CD150; CDw150; SLAM

Protein Construction:

A DNA sequence encoding the human SLAM (NP_003028.1) precursor (Met 1-Pro 258) with a C-terminal polyhistidine tag was expressed.

Source: Human

Expression Host: HEK293 Cells

QC Testing

Purity: > 97 % as determined by SDS-PAGE

Bio Activity:

Measured by its ability to bind biotinylated recombinant human SH2D1A in a functional ELISA.

Endotoxin:

< 1.0 EU per µg of the protein as determined by the LAL method

Stability:

Samples are stable for up to twelve months from date of receipt at -70 °C

Predicted N terminal: Ala 21

Molecular Mass:

The secreted recombinant human SLAM comprises 228 amino acids with a predicted molecular mass of 25.8 kDa. As a result of glycosylation, it migrates as an approximately 45-50 kDa band in SDS-PAGE under reducing conditions.

Formulation:

Lyophilized from sterile PBS, pH 7.4

Normally 5 % - 8 % trehalose, mannitol and 0.01% Tween80 are added as protectants before lyophilization. Specific concentrations are included in the hardcopy of COA. Please contact us for any concerns or special requirements.

Usage Guide

Storage:

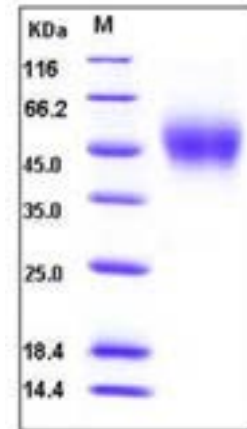
Store it under sterile conditions at -20°C to -80°C upon receiving. Recommend to aliquot the protein into smaller quantities for optimal storage.

Avoid repeated freeze-thaw cycles.

Reconstitution:

Detailed reconstitution instructions are sent along with the products.

SDS-PAGE:



Protein Description

CD150/signaling lymphocytic activation molecule (SLAM) is a cell surface sialylated phosphoglycoprotein and belongs to the CD2 subset of the Ig superfamily of type I transmembrane glycoproteins. The CD150 receptor is expressed on thymocytes, activated and memory T cells, B cells, platelets, natural killer T cells, and mature dendritic cells, and is also detected on tumor cells of Hodgkin's lymphoma (HL) and diffuse large B-cell lymphoma with an activated B cell phenotype. Additionally, it is the immune cell receptor for measles virus (MV). As a self-ligand, CD150 performs diverse immunologic functions including T/B-cell costimulation, induction of IFN- γ in Th1 T-cell clones, redirection of Th2 clones to a Th1 or Th0 phenotype, and inhibition of apoptosis in B cells. Furthermore, CD150 was shown to be the second receptor for measles virus in addition to CD46, and the distribution of SLAM on various cell lines is consistent with their susceptibility to clinical isolates of measles virus.

References

1. Tatsuo H, *et al.* (2002) The morbillivirus receptor SLAM (CD150). *Microbiol Immunol.* 46(3): 135-42.
2. Sidorenko SP, *et al.* (2003) The dual-function CD150 receptor subfamily: the viral attraction. *Nat Immunol.* 4(1): 19-24.
3. Yurchenko MY, *et al.* (2010) CD150 regulates JNK1/2 activation in normal and Hodgkin's lymphoma B cells. *Immunol Cell Biol.* 88(5): 565-74.

Manufactured By Sino Biological Inc., FOR RESEARCH USE ONLY. NOT FOR USE IN HUMANS.

For US Customer: Fax: 267-657-0217 • Tel: 215-583-7898

Global Customer: Fax :+86-10-5862-8288 • Tel:+86-400-890-9989 • <http://www.sinobiological.com>