

CD150 / SLAM / SLAMF1 Antibody, Rabbit PAb, Antigen Affinity Purified



Sino Biological
Biological Solution Specialist

Catalog Number: 10837-RP01

GENERAL INFORMATION	
Immunogen:	Recombinant Human CD150 protein (Catalog#10837-H08H)
Preparation	Produced in rabbits immunized with purified, recombinant Human SLAMF1 / CD150 (rhSLAMF1; Catalog#10837-H08H; NP_003028.1; Met 1-Pro 258). SLAMF1 specific IgG was purified by human SLAMF1 affinity chromatography.
Ig Type:	Rabbit IgG
Specificity:	Human SLAMF1 / CD150 / SLAM
Formulation:	0.2 µm filtered solution in PBS
Storage:	This antibody can be stored at 2°C-8°C for one month without detectable loss of activity. Antibody products are stable for twelve months from date of receipt when stored at -20°C to -80°C. Preservative-Free. Avoid repeated freeze-thaw cycles.
APPLICATIONS	
Applications:	ELISA,IHC-P
RECOMMENDED CONCENTRATION	
IHC-P	IHC-P: 1:500-1:2000
ELISA	ELISA: 1:1000-1:2000 This antibody can be used at 1:1000-1:2000 with the appropriate secondary reagents to detect Human SLAMF1.

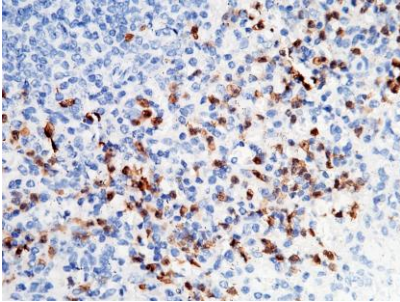
Please Note: Optimal concentrations/dilutions should be determined by the end user.

CD150 / SLAM / SLAMF1 Antibody, Rabbit PAb, Antigen Affinity Purified

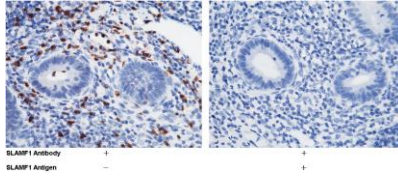


Sino Biological
Biological Solution Specialist

Catalog Number: 10837-RP01



Immunochemical staining of human SLAMF1 in human spleen with rabbit polyclonal antibody (1:1000, formalin-fixed paraffin embedded sections).



Immunochemical staining of human SLAMF1 in human appendix with rabbit polyclonal antibody (1:1000, formalin-fixed paraffin embedded sections). The left panel: tissue incubated with primary antibody; The right panel: tissue incubated with the mixture of primary antibody and antigen (recombinant protein).