

Human 14-3-3 tau / 14-3-3 theta / YWHAQ Protein (GST Tag)

Catalog Number: 10845-H09E



Sino Biological
Biological Solution Specialist

General Information

Gene Name Synonym:

1C5; 41701; HS1

Protein Construction:

A DNA sequence encoding the human YWHAQ (P27348) (Met 1-Asn 245) was fused with the GST tag at the N-terminus.

Source: Human

Expression Host: E. coli

QC Testing

Purity: > 88 % as determined by SDS-PAGE

Endotoxin:

Please contact us for more information.

Stability:

Samples are stable for up to twelve months from date of receipt at -70 °C

Predicted N terminal: Met

Molecular Mass:

The recombinant human YWHAQ/GST chimera consists of 476 amino acids and has a predicted molecular mass of 54.6 kDa. It migrates as an approximately 53 kDa band in SDS-PAGE under reducing conditions.

Formulation:

Lyophilized from sterile 20mM Tris, 0.15m NaCl, 20mM GSH, pH 7.5

Normally 5 % - 8 % trehalose, mannitol and 0.01% Tween80 are added as protectants before lyophilization. Specific concentrations are included in the hardcopy of COA. Please contact us for any concerns or special requirements.

Usage Guide

Storage:

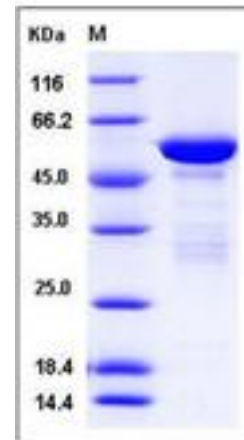
Store it under sterile conditions at -20°C to -80°C upon receiving. Recommend to aliquot the protein into smaller quantities for optimal storage.

Avoid repeated freeze-thaw cycles.

Reconstitution:

Detailed reconstitution instructions are sent along with the products.

SDS-PAGE:



References

- 1.Cheng Y, *et al.* (2010) Effect of 14-3-3 tau protein on differentiation in BeWo choriocarcinoma cells. *Placenta*. 31(1): 60-6.
- 2.Umahara T, *et al.* (2010) 14-3-3 proteins and spinocerebellar ataxia type 1: from molecular interaction to human neuropathology. *Cerebellum*. 9(2): 183-9.
- 3.Wang B, *et al.* (2004) A role for 14-3-3 tau in E2F1 stabilization and DNA damage-induced apoptosis. *J Biol Chem*. 279(52): 54140-52.

Manufactured By Sino Biological Inc., FOR RESEARCH USE ONLY. NOT FOR USE IN HUMANS.

For US Customer: Fax: 267-657-0217 • Tel: 215-583-7898

Global Customer: Fax :+86-10-5862-8288 • Tel:+86-400-890-9989 • <http://www.sinobiological.com>