

Lp-PLA2 / PLA2G7 / PAFAH Antibody, Rabbit PAb, Antigen Affinity Purified



Sino Biological
Biological Solution Specialist

Catalog Number: 10848-T24

GENERAL INFORMATION

Immunogen:	Recombinant Human Lp-PLA2 / PLA2G7 / PAFAH Protein (Catalog#10848-H08H)
Preparation	Produced in rabbits immunized with purified, recombinant Human Lp-PLA2 / PLA2G7 / PAFAH (rh Lp-PLA2 / PLA2G7 / PAFAH; Catalog#10848-H08H; Q13093-1; Met1-Asn441). Lp-PLA2 / PLA2G7 / PAFAH specific IgG was purified by Human Lp-PLA2 / PLA2G7 / PAFAH affinity chromatography.
Ig Type:	Rabbit IgG
Specificity:	Human Lp-PLA2 / PLA2G7 / PAFAH
Formulation:	0.2 µm filtered solution in PBS
Storage:	This antibody can be stored at 2°C-8°C for one month without detectable loss of activity. Antibody products are stable for twelve months from date of receipt when stored at -20°C to -80°C. Preservative-Free. Sodium azide is recommended to avoid contamination (final concentration 0.05%-0.1%). It is toxic to cells and should be disposed of properly. Avoid repeated freeze-thaw cycles.

APPLICATIONS

Applications:	ELISA, IHC-P
----------------------	--------------

RECOMMENDED CONCENTRATION

IHC-P	IHC-P: 1:200-1:1000
ELISA	ELISA: 1:5000-1:10000 This antibody can be used at 1:5000-1:10000 with the appropriate secondary reagents to detect Human Lp-PLA2 / PLA2G7 / PAFAH.

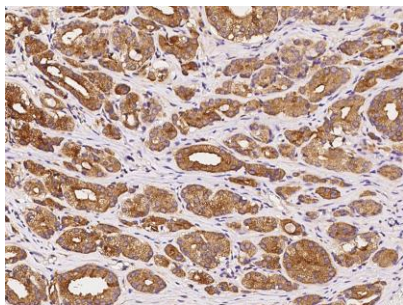
Please Note: Optimal concentrations/dilutions should be determined by the end user.

Lp-PLA2 / PLA2G7 / PAFAH Antibody, Rabbit PAb, Antigen Affinity Purified

Catalog Number: 10848-T24



Sino Biological
Biological Solution Specialist



Immunohistochemical staining of human PLA2G7 in human prostatic carcinoma with rabbit polyclonal antibody at 1:300 dilution, formalin-fixed paraffin embedded sections.