

TXNL1 Antibody, Rabbit PAb, Antigen Affinity Purified



Sino Biological
Biological Solution Specialist

Catalog Number: 108486-T40

GENERAL INFORMATION

Immunogen:	A synthetic peptide corresponding to the center region of the Human TXNL1
Preparation	Produced in rabbits immunized with a synthetic peptide corresponding to the center region of the Human TXNL1, and purified by antigen affinity chromatography.
Ig Type:	Rabbit IgG
Specificity:	Human, Mouse Rat (Species predicted to react based on 100% sequence homology)
	Reacts with Mouse
Formulation:	PBS, pH7.0 with 0.03% Proclin300
Storage:	This antibody can be stored at 2°C-8°C for one month without detectable loss of activity. Antibody products are stable for twelve months from date of receipt when stored at -20°C to -80°C. Avoid repeated freeze-thaw cycles.

APPLICATIONS

Applications:	WB,IHC-P
----------------------	----------

RECOMMENDED CONCENTRATION

IHC-P	IHC-P: 1:200-1:1000
Western Blot	WB: 1:500-1:2000

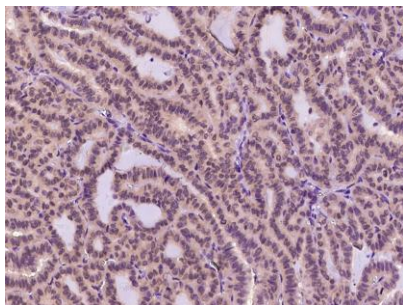
Please Note: Optimal concentrations/dilutions should be determined by the end user.

TXNL1 Antibody, Rabbit PAb, Antigen Affinity Purified

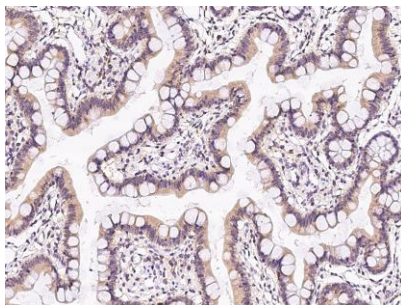


Sino Biological
Biological Solution Specialist

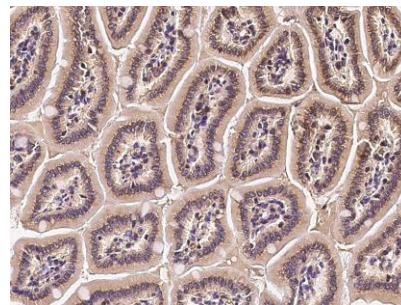
Catalog Number: 108486-T40



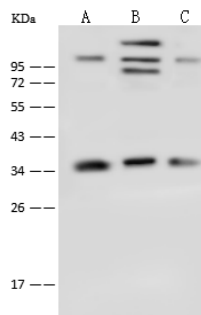
Immunohistochemical staining of human TXNL1 in human thyroid carcinoma with rabbit polyclonal antibody at 1:1000 dilution, formalin-fixed paraffin embedded sections.



Immunohistochemical staining of human TXNL1 in human small intestine with rabbit polyclonal antibody at 1:300 dilution, formalin-fixed paraffin embedded sections.



Immunohistochemical staining of human TXNL1 in mouse small intestine with rabbit polyclonal antibody at 1:300 dilution, formalin-fixed paraffin embedded sections.



Anti-TXNL1 rabbit polyclonal antibody at 1:500 dilution

Lane A: HL-60 Whole Cell Lysate

Lane B: Caco2 Whole Cell Lysate

Lane C: K562 Whole Cell Lysate

Lysates/proteins at 30 µg per lane.

Secondary

Goat Anti-Rabbit IgG (H+L)/HRP at 1/10000 dilution.

Developed using the ECL technique.

Performed under reducing conditions.

Predicted band size: 32 kDa

Manufactured By Sino Biological Inc., FOR RESEARCH USE ONLY. NOT FOR USE IN HUMANS.

Tel: 215-583-7898 (US); +86-400-890-9989(Global) •

<http://www.sinobiological.com>