

Cytokeratin 8 Antibody, Mouse MAb



Sino Biological
Biological Solution Specialist

Catalog Number: 108772-MM04

GENERAL INFORMATION

Immunogen:	A synthetic peptide corresponding to the C-terminus of the Human Cytokeratin 8
Preparation	This antibody was produced from a hybridoma resulting from the fusion of a mouse myeloma with B cells obtained from a mouse immunized with a synthetic peptide corresponding to the C-terminus of the Human Cytokeratin 8. The IgG fraction of the cell culture supernatant was purified by Protein A affinity chromatography.
Ig Type:	Mouse IgG1
Clone ID:	04
Specificity:	Human Cytokeratin 8
Formulation:	0.2 µm filtered solution in PBS
Storage:	This antibody can be stored at 2°C-8°C for one month without detectable loss of activity. Antibody products are stable for twelve months from date of receipt when stored at -20°C to -80°C. Preservative-Free. Avoid repeated freeze-thaw cycles.
Alternative Names:	KRT8

APPLICATIONS

Applications:	IHC-P, ICC/IF
----------------------	---------------

RECOMMENDED CONCENTRATION

IHC-P	IHC-P: 1:500-1:5000
ICC/IF	ICC/IF: 1:20-1:100

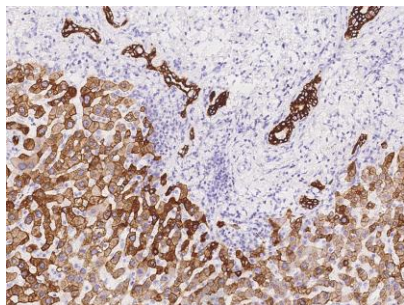
Please Note: Optimal concentrations/dilutions should be determined by the end user.

Cytokeratin 8 Antibody, Mouse MAb

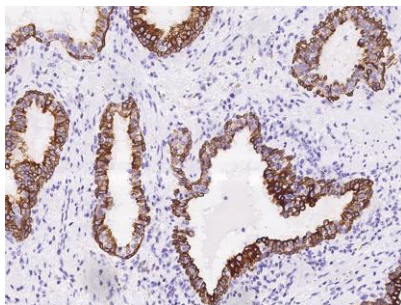


Sino Biological
Biological Solution Specialist

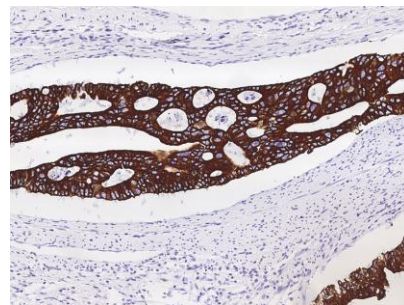
Catalog Number: 108772-MM04



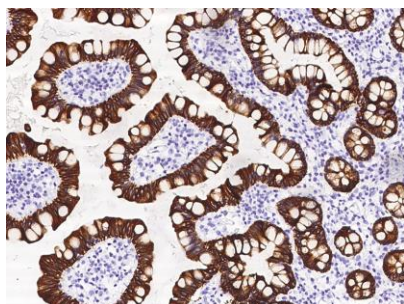
Immunohistochemical staining of human Cytokeratin 8 in human liver with mouse monoclonal antibody at 1:2000 dilution, formalin-fixed paraffin embedded sections.



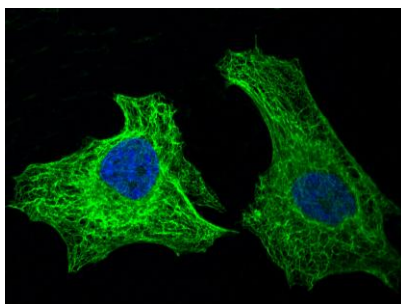
Immunohistochemical staining of human Cytokeratin 8 in human prostate with mouse monoclonal antibody at 1:2000 dilution, formalin-fixed paraffin embedded sections.



Immunohistochemical staining of human Cytokeratin 8 in human colon carcinoma with mouse monoclonal antibody at 1:2000 dilution, formalin-fixed paraffin embedded sections.



Immunohistochemical staining of human Cytokeratin 8 in human small intestine with mouse monoclonal antibody at 1:2000 dilution, formalin-fixed paraffin embedded sections.



Immunofluorescence staining of KRT8 in Hela cells. Cells were fixed with 4% PFA, permeabilized with 0.1% Triton X-100 in PBS, blocked with 10% serum, and incubated with mouse anti-Human KRT8 monoclonal antibody (dilution ratio 1:60) at 4°C overnight. Then cells were stained with the Alexa Fluor®488-conjugated Goat Anti-mouse IgG secondary antibody (green) and counterstained with DAPI (blue). Positive staining was localized to Cytoplasm.