

Insulin Antibody, Rabbit PAb, Antigen Affinity Purified



Sino Biological
Biological Solution Specialist

Catalog Number: 11038-T24

GENERAL INFORMATION	
Immunogen:	Recombinant Human Insulin / INS Protein (Catalog#11038-HNAY)
Preparation	Produced in rabbits immunized with purified, recombinant Human Insulin / INS (rh Insulin / INS; Catalog#11038-HNAY; INS_HUMAN; Phe1-Lys29 & Gly1-Asn21). Insulin specific IgG was purified by Human Insulin / INS affinity chromatography.
Ig Type:	Rabbit IgG
Specificity:	Human Insulin / INS
Formulation:	0.2 µm filtered solution in PBS
Storage:	This antibody can be stored at 2°C-8°C for one month without detectable loss of activity. Antibody products are stable for twelve months from date of receipt when stored at -20°C to -80°C. Preservative-Free. Avoid repeated freeze-thaw cycles.
APPLICATIONS	
Applications:	ELISA, IHC-P
RECOMMENDED CONCENTRATION	
IHC-P	IHC-P: 1500-1:5000
ELISA	ELISA: 1:5000-1:10000 This antibody can be used at 1:5000-1:10000 with the appropriate secondary reagents to detect Human Insulin / INS.

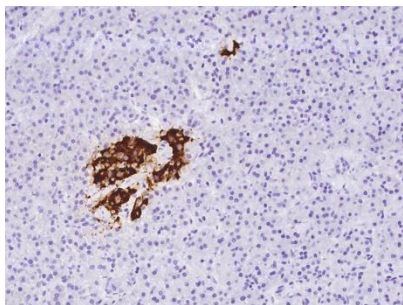
Please Note: Optimal concentrations/dilutions should be determined by the end user.

Insulin Antibody, Rabbit PAb, Antigen Affinity Purified

Catalog Number: 11038-T24



Sino Biological
Biological Solution Specialist



Immunohistochemical staining of human Insulin in human pancreas with rabbit polyclonal antibody at 1:2000 dilution, formalin-fixed paraffin embedded sections.