

N-Cadherin / CD325 / CDH2 Antibody (APC), Rabbit MAb



Sino Biological
Biological Solution Specialist

Catalog Number: 11039-R020-A

EliteRmab® is a registered trademark of Sino Biological Inc.

GENERAL INFORMATION

Immunogen:	Recombinant Human N-Cadherin / CD325 / CDH2 protein (Catalog#11039-H08H)
Reagents:	APC-conjugated Rabbit monoclonal antibody
Preparation	This antibody was obtained from a rabbit immunized with purified, recombinant Human N-Cadherin / CD325 / CDH2 (rh N-Cadherin / CD325 / CDH2; Catalog#11039-H08H; NP_001783.2; Met1-Ala724) and conjugated with APC under optimum conditions, the unreacted APC was removed.
Ig Type:	Rabbit IgG
Clone ID:	020
Specificity:	Human N-Cadherin / CD325 / CDH2
Concentration:	10 µl/Test, 0.1 mg/ml
Formulation:	Aqueous solution containing 0.5% BSA and 0.09% sodium azide
Storage:	This antibody can be stored at 2℃-8℃ for twelve months without detectable loss of activity. Protected from prolonged exposure to light. Do not freeze ! Sodium azide is toxic to cells and should be disposed of properly. Flush with large volumes of water during disposal.
Alternative Names:	CD325,CDHN,CDw325,NCAD

APPLICATIONS

Applications:	FCM
----------------------	-----

Please Note: Optimal concentrations/dilutions should be determined by the end user.

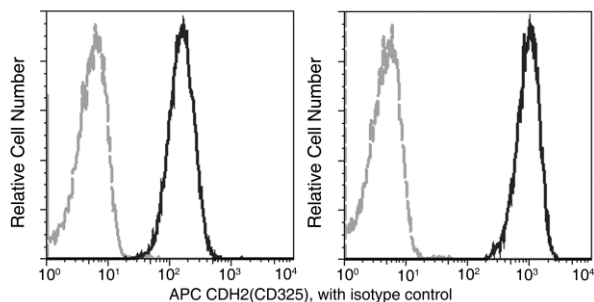
N-Cadherin / CD325 / CDH2 Antibody (APC), Rabbit MAb

Catalog Number: 11039-R020-A



Sino Biological
Biological Solution Specialist

EliteRmab® is a registered trademark of Sino Biological Inc.



Flow cytometry analysis of N-Cadherin on HeLa cells. HeLa cells were harvested with (Left) or without (Right) trypsinization (please note, the epitope is sensitive to trypsin) and stained with either Rabbit IgG isotype control FITC (dashed line) or Rabbit Anti-Human CD325 antibody APC (solid line) at matching concentrations.

Flow cytometry was performed on a BD FACSCalibur flow cytometry system. Please refer to www.sinobiological.com/Flow-Cytometry-FACS-Protocols-a-750.html for technical protocols.