

Insulin Receptor/INSR/CD220 Antibody, Mouse MAb



Sino Biological
Biological Solution Specialist

Catalog Number: 11086-MM07

GENERAL INFORMATION	
Immunogen:	Recombinant Human Insulin Receptor/INSR/CD220 Protein (Catalog#11086-H08H)
Preparation	This antibody was produced from a hybridoma resulting from the fusion of a mouse myeloma with B cells obtained from a mouse immunized with purified, recombinant Human Insulin Receptor/INSR/CD220 (rh Insulin Receptor/INSR/CD220; Catalog#11086-H08H; NP_001073285.1; Met1-Lys944). The IgG fraction of the cell culture supernatant was purified by Protein A affinity chromatography.
Ig Type:	Mouse IgG1
Clone ID:	07
Specificity:	Human Insulin Receptor/INSR/CD220
Formulation:	0.2 µm filtered solution in PBS
Storage:	This antibody can be stored at 2°C-8°C for one month without detectable loss of activity. Antibody products are stable for twelve months from date of receipt when stored at -20°C to -80°C. Preservative-Free. Sodium azide is recommended to avoid contamination (final concentration 0.05%-0.1%). It is toxic to cells and should be disposed of properly. Avoid repeated freeze-thaw cycles.
APPLICATIONS	
Applications:	IHC-P
RECOMMENDED CONCENTRATION	
IHC-P	IHC-P: 1:100-1:500

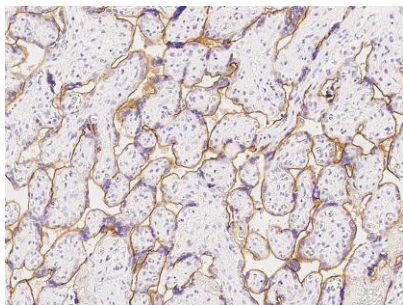
Please Note: Optimal concentrations/dilutions should be determined by the end user.

Insulin Receptor/INSR/CD220 Antibody, Mouse MAb

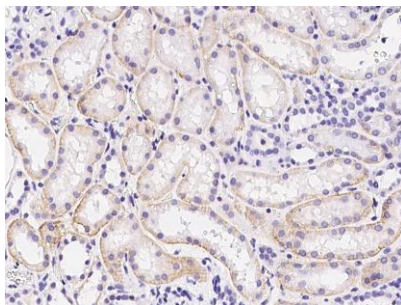


Sino Biological
Biological Solution Specialist

Catalog Number: 11086-MM07



Immunochemical staining of human INSR in human placenta with mouse monoclonal antibody (1:200, formalin-fixed paraffin embedded sections).



Immunochemical staining of human INSR in human kidney with mouse monoclonal antibody (1:200, formalin-fixed paraffin embedded sections).