

S100A8/MRP-8 Antibody, Rabbit PAb, Antigen Affinity Purified



Sino Biological
Biological Solution Specialist

Catalog Number: 11138-T58

GENERAL INFORMATION

Immunogen:	Recombinant Human S100A8/MRP-8 Protein (Catalog#11138-H08B)
Preparation	Produced in rabbits immunized with purified, recombinant Human S100A8/MRP-8 (rh S100A8/MRP-8; Catalog#11138-H08B; NP_002955.2; Met1-Glu93). S100A8/MRP-8 specific IgG was purified by Human S100A8/MRP-8 affinity chromatography.
Ig Type:	Rabbit IgG
Specificity:	Human S100A8/MRP-8
Formulation:	0.2 µm filtered solution in PBS
Storage:	This antibody can be stored at 2°C-8°C for one month without detectable loss of activity. Antibody products are stable for twelve months from date of receipt when stored at -20°C to -80°C. Preservative-Free. Avoid repeated freeze-thaw cycles.
Alternative Names:	60B8AG,CAGA,CFAG,CGLA,CP-10,L1Ag,MA387,MIF,MRP-8,MRP8,NIF,P8

APPLICATIONS

Applications:	WB,ELISA,IHC-P,ICC/IF
----------------------	-----------------------

RECOMMENDED CONCENTRATION

IHC-P	IHC-P: 1:100000-1:5000
ICC/IF	ICC/IF: 1:300-1:10000
Western Blot	WB: 1:500-1:2000
ELISA	ELISA: 1:5000-1:10000 This antibody can be used at 1:5000-1:10000 with the appropriate secondary reagents to detect Human S100A8/MRP-8.

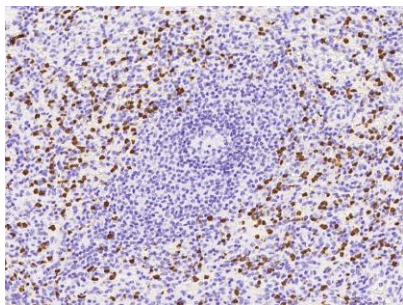
Please Note: Optimal concentrations/dilutions should be determined by the end user.

S100A8/MRP-8 Antibody, Rabbit PAb, Antigen Affinity Purified

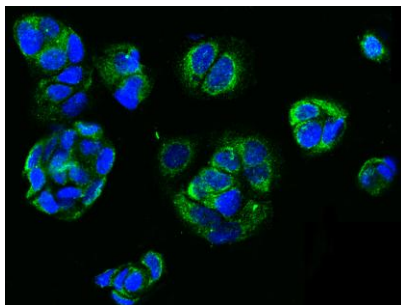
Catalog Number: 11138-T58



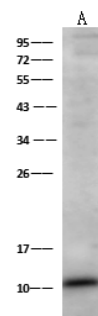
Sino Biological
Biological Solution Specialist



Immunohistochemical staining of human S100A8 in human spleen with rabbit polyclonal antibody at 1:100000 dilution, formalin-fixed paraffin embedded sections.



Immunofluorescence staining of S100A8 in MCF7 cells. Cells were fixed with 4% PFA, permeabilized with 0.1% Triton X-100 in PBS, blocked with 10% serum, and incubated with rabbit anti-Human S100A8 polyclonal antibody (dilution ratio 1:1000) at 4°C overnight. Then cells were stained with the Alexa Fluor 488-conjugated Goat Anti-rabbit IgG secondary antibody (green) and counterstained with DAPI (blue). Positive staining was localized to cytoplasm.



Anti-S100A8 rabbit polyclonal antibody at 1:500 dilution

Lane A: HL-60 Whole Cell Lysate

Lysates/proteins at 30 µg per lane.

Secondary
Goat Anti-Rabbit IgG (H+L)/HRP at 1/10000 dilution.

Developed using the ECL technique. Performed under reducing conditions.

Predicted band size: 11 kDa
Observed band size: 12 kDa