

CD68 Antibody, Rabbit MAb



Sino Biological
Biological Solution Specialist

Catalog Number: 11192-R179

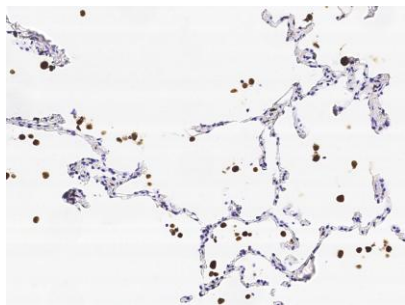
EliteRmab® is a registered trademark of Sino Biological Inc.

GENERAL INFORMATION	
Immunogen:	Recombinant Human CD68 Protein (Catalog#11192-H08B1)
Preparation	This antibody was obtained from a rabbit immunized with purified, recombinant Human CD68 (rh CD68; Catalog#11192-H08B1; P34810-1; Met1-Ser319).
Ig Type:	Rabbit IgG
Clone ID:	179
Specificity:	Human, Cynomolgus
Formulation:	0.2 µm filtered solution in PBS
Storage:	This antibody can be stored at 2°C-8°C for one month without detectable loss of activity. Antibody products are stable for twelve months from date of receipt when stored at -20°C to -80°C. Preservative-Free. Sodium azide is recommended to avoid contamination (final concentration 0.05%-0.1%). It is toxic to cells and should be disposed of properly. Avoid repeated freeze-thaw cycles.
APPLICATIONS	
Applications:	IHC-P
RECOMMENDED CONCENTRATION	
IHC-P	IHC-P: 1:60-1:500

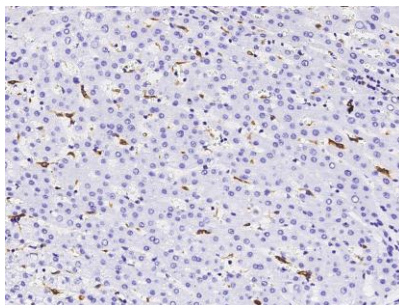
Please Note: Optimal concentrations/dilutions should be determined by the end user.

Catalog Number: 11192-R179

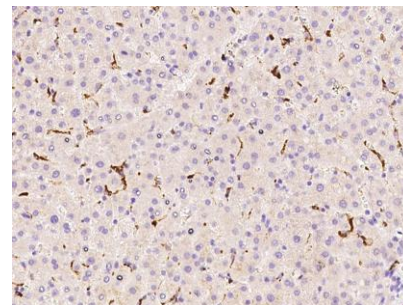
EliteRmab® is a registered trademark of Sino Biological Inc.



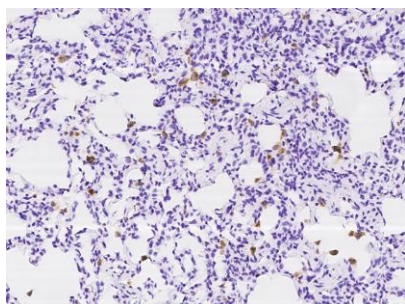
Immunohistochemical staining CD68 in human lung with rabbit monoclonal antibody (1:200, formalin-fixed paraffin embedded sections).



Immunohistochemical staining CD68 in human liver with rabbit monoclonal antibody (1:200, formalin-fixed paraffin embedded sections).



Immunohistochemical staining CD68 in human liver with mouse monoclonal antibody at 1:60 dilution, formalin-fixed paraffin embedded sections.



Immunohistochemical staining CD68 in cynomolgus lung with rabbit monoclonal antibody at 1:60 dilution, formalin-fixed paraffin embedded sections.