

HPGD / 15-PGDH Antibody, Mouse MAb



Sino Biological
Biological Solution Specialist

Catalog Number: 11205-MM02

GENERAL INFORMATION

Immunogen:	Recombinant Human HPGD / 15-PGDH protein (Catalog#11205-H08E)
Preparation	This antibody was produced from a hybridoma resulting from the fusion of a mouse myeloma with B cells obtained from a mouse immunized with purified, recombinant Human HPGD / 15-PGDH (rh HPGD / 15-PGDH; Catalog#11205-H08E; NP_000851.2; Met 1-Gln 266). The IgG fraction of the cell culture supernatant was purified by Protein A affinity chromatography.
Ig Type:	Mouse IgG1
Clone ID:	2B10G12D2
Specificity:	Human HPGD / 15-PGDH
Formulation:	0.2 µm filtered solution in PBS
Storage:	This antibody can be stored at 2°C-8°C for one month without detectable loss of activity. Antibody products are stable for twelve months from date of receipt when stored at -20°C to -80°C. Preservative-Free. Sodium azide is recommended to avoid contamination (final concentration 0.05%-0.1%). It is toxic to cells and should be disposed of properly. Avoid repeated freeze-thaw cycles.

APPLICATIONS

Applications:	WB, ELISA
----------------------	-----------

RECOMMENDED CONCENTRATION

Western Blot	WB: 1:500-1:1000
ELISA	ELISA: 1:5000-1:10000 This antibody can be used at 1:5000-1:10000 with the appropriate secondary reagents to detect Human HPGD.

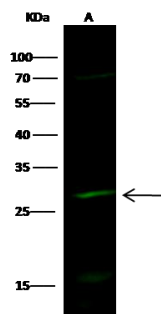
Please Note: Optimal concentrations/dilutions should be determined by the end user.

HPGD / 15-PGDH Antibody, Mouse MAb



Sino Biological
Biological Solution Specialist

Catalog Number: 11205-MM02



Anti-HPGD mouse monoclonal antibody at
1:500 dilution
Lane A: LOVO Whole Cell Lysate

Lysates/proteins at 30 µg per lane.
Secondary
Goat Anti-Mouse IgG H&L (Dylight800) at
1/10000 dilution.

Developed using the Odyssey technique.
Performed under reducing conditions.

Predicted band size: 29 kDa