

C-Reactive Protein/CRP Antibody, Rabbit PAb, Antigen Affinity Purified



Sino Biological
Biological Solution Specialist

Catalog Number: 11250-T54

GENERAL INFORMATION

Immunogen:	Recombinant Human C-Reactive Protein/CRP Protein (Catalog#11250-HNAH)
Preparation	Produced in rabbits immunized with purified, recombinant Human C-Reactive Protein/CRP (rh C-Reactive Protein/CRP; Catalog#11250-HNAH; P02741-1; Met1-Pro224). C-Reactive Protein/CRP specific IgG was purified by Human C-Reactive Protein/CRP affinity chromatography.
Ig Type:	Rabbit IgG
Specificity:	Human C-Reactive Protein/CRP
Formulation:	0.2 µm filtered solution in PBS
Storage:	This antibody can be stored at 2°C-8°C for one month without detectable loss of activity. Antibody products are stable for twelve months from date of receipt when stored at -20°C to -80°C. Preservative-Free. Avoid repeated freeze-thaw cycles.
Alternative Names:	C-Reactive Protein,PTX1

APPLICATIONS

Applications:	WB,ELISA,ICC/IF,IP
----------------------	--------------------

RECOMMENDED CONCENTRATION

ICC/IF	ICC/IF: 1:100-1:500
Western Blot	WB: 1:500-1:2000
Immunoprecipitation	IP:0.5-2µL/mg of lysate
ELISA	ELISA: 1:5000-1:10000 This antibody can be used at 1:5000-1:10000 with the appropriate secondary reagents to detect Human C-Reactive Protein/CRP.

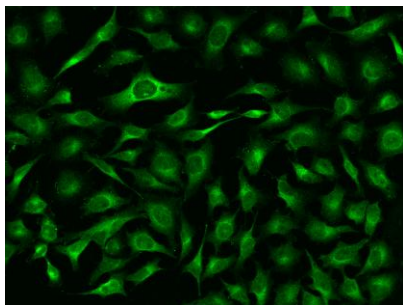
Please Note: Optimal concentrations/dilutions should be determined by the end user.

C-Reactive Protein/CRP Antibody, Rabbit PAb, Antigen Affinity Purified

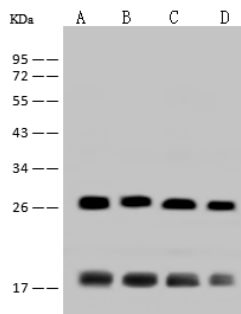


Sino Biological
Biological Solution Specialist

Catalog Number: 11250-T54



Immunofluorescence staining of CRP in HeLa cells. Cells were fixed with 4% PFA, permeabilized with 0.1% Triton X-100 in PBS, blocked with 10% serum, and incubated with rabbit anti-Human CRP polyclonal antibody (dilution ratio 1:200) at 4°C overnight. Then cells were stained with the Alexa Fluor®488-conjugated Goat Anti-rabbit IgG secondary antibody (green). Positive staining was localized to Cytoplasm.



Anti-CRP rabbit polyclonal antibody at 1:500 dilution

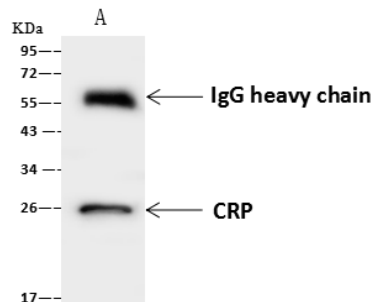
Lane A: HepG2 Whole Cell Lysate
Lane B: SH-SY5Y Whole Cell Lysate
Lane C: Jurkat Whole Cell Lysate
Lane D: HeLa Whole Cell Lysate

Lysates/proteins at 30 µg per lane.

Secondary
Goat Anti-Rabbit IgG (H+L)/HRP at 1/10000 dilution.

Developed using the ECL technique. Performed under reducing conditions.

Predicted band size: 25 kDa
Observed band size: 27 kDa



CRP was immunoprecipitated using:
Lane A: 0.5 mg HepG2 Whole Cell Lysate

4 µL anti-CRP rabbit polyclonal antibody and 60 µg of Immunomagnetic beads Protein A/G. Primary antibody:

Anti-CRP rabbit polyclonal antibody, at 1:100 dilution

Secondary antibody:
Goat Anti-Rabbit IgG (H+L)/HRP at 1/10000 dilution

Developed using the ECL technique. Performed under reducing conditions.

Predicted band size: 25 kDa
Observed band size: 26 kDa