

PRMT6 / HRMT1L6 Antibody, Mouse MAb



Sino Biological
Biological Solution Specialist

Catalog Number: 11313-MM02

GENERAL INFORMATION	
Immunogen:	Recombinant Human PRMT6 protein (Catalog#11313-H18H)
Preparation	This antibody was produced from a hybridoma resulting from the fusion of a mouse myeloma with B cells obtained from a mouse immunized with purified, recombinant Human PRMT6 (rh PRMT6; Catalog#11313-H18H; NP_060607.2; Met 1-Asp 375). The IgG fraction of the cell culture supernatant was purified by Protein A affinity chromatography.
Ig Type:	Mouse IgG2b
Clone ID:	4B11F1C10
Specificity:	Human PRMT6 / HRMT1L6
Formulation:	0.2 µm filtered solution in PBS
Storage:	This antibody can be stored at 2°C-8°C for one month without detectable loss of activity. Antibody products are stable for twelve months from date of receipt when stored at -20°C to -80°C. Preservative-Free. Avoid repeated freeze-thaw cycles.
APPLICATIONS	
Applications:	WB, ELISA
RECOMMENDED CONCENTRATION	
Western Blot	WB: 1:500-1:1000
ELISA	ELISA: 1:5000-1:10000 This antibody can be used at 1:5000-1:10000 with the appropriate secondary reagents to detect Human PRMT6.

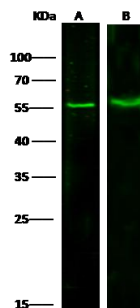
Please Note: Optimal concentrations/dilutions should be determined by the end user.

PRMT6 / HRMT1L6 Antibody, Mouse MAb



Sino Biological
Biological Solution Specialist

Catalog Number: 11313-MM02



Anti-PRMT6 mouse monoclonal antibody at 1:500 dilution

Lane A: 293T Whole Cell Lysate

Lane B: A431 Whole Cell Lysate

Lysates/proteins at 30 µg per lane.

Secondary

Goat Anti-Mouse IgG H&L (Dylight800) at 1/15000 dilution.

Developed using the Odyssey technique.

Performed under reducing conditions.

Predicted band size: 42 kDa

Observed band size: 55 kDa