

CUEDC2 Antibody, Mouse MAb



Sino Biological
Biological Solution Specialist

Catalog Number: 11466-MM08T

GENERAL INFORMATION

Immunogen:	Recombinant Human CUEDC2 Protein
Preparation	This antibody was produced from a hybridoma resulting from the fusion of a mouse myeloma with B cells obtained from a mouse immunized with purified, recombinant Human CUEDC2 (rh CUEDC2; NP_076945.2; aa1-287). The IgG fraction of the cell culture supernatant was purified by Protein A affinity chromatography.
Ig Type:	Mouse IgG1
Clone ID:	08
Specificity:	Human CUEDC2
Formulation:	0.2 µm filtered solution in PBS
Storage:	This antibody can be stored at 2°C-8°C for one month without detectable loss of activity. Antibody products are stable for twelve months from date of receipt when stored at -20°C to -80°C. Preservative-Free. Sodium azide is recommended to avoid contamination (final concentration 0.05%-0.1%). It is toxic to cells and should be disposed of properly. Avoid repeated freeze-thaw cycles.

APPLICATIONS

Applications:	FCM
---------------	-----

RECOMMENDED CONCENTRATION

Flow Cytometry	FCM: 1:25-1:100
----------------	-----------------

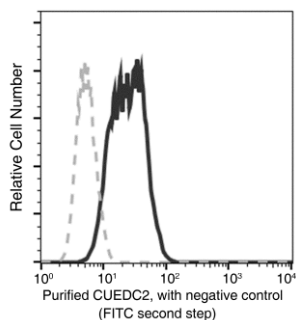
Please Note: Optimal concentrations/dilutions should be determined by the end user.

CUEDC2 Antibody, Mouse MAb



Sino Biological
Biological Solution Specialist

Catalog Number: 11466-MM08T



Flow cytometric analysis of Human CUEDC2 expression on SHSY5Y cells. The cells were treated according to manufacturer's manual (BD Pharmingen™ Cat. No. 554714), stained with purified anti-Human CUEDC2, then a FITC-conjugated second step antibody. The fluorescence histograms were derived from gated events with the forward and side light-scatter characteristics of intact cells.

Flow cytometry was performed on a BD FACSCalibur flow cytometry system. Please refer to www.sinobiological.com/Flow-Cytometry-FACS-Protocols-a-750.html for technical protocols.