

Human CMA1 / Chymase 1 Protein (His Tag)



Sino Biological
Biological Solution Specialist

Catalog Number: 11482-H08B

General Information

Gene Name Synonym:

chymase; CYH; MCT1

Protein Construction:

A DNA sequence encoding the human CMA1 (P23946) (Met 1-Asn 247) was fused with a polyhistidine tag at the C-terminus.

Source: Human

Expression Host: Baculovirus-Insect Cells

QC Testing

Purity: > 92 % as determined by SDS-PAGE

Endotoxin:

< 1.0 EU per μ g of the protein as determined by the LAL method

Stability:

Samples are stable for up to twelve months from date of receipt at -70 °C

Predicted N terminal: Gly 20

Molecular Mass:

The secreted recombinant human CMA1 consists of 238 amino acids and predicts a molecular mass of 26.6 kDa. It migrates as an approximately 33 kDa band in SDS-PAGE under reducing conditions.

Formulation:

Lyophilized from sterile 20mM Tris, 500mM NaCl, pH 7.4, 10% gly

Normally 5 % - 8 % trehalose, mannitol and 0.01% Tween80 are added as protectants before lyophilization. Specific concentrations are included in the hardcopy of COA. Please contact us for any concerns or special requirements.

Usage Guide

Storage:

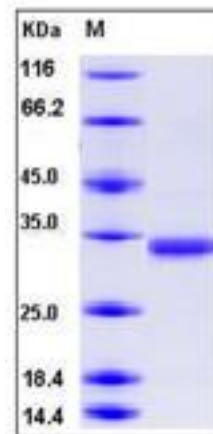
Store it under sterile conditions at -20°C to -80°C upon receiving. Recommend to aliquot the protein into smaller quantities for optimal storage.

Avoid repeated freeze-thaw cycles.

Reconstitution:

Detailed reconstitution instructions are sent along with the products.

SDS-PAGE:



References

1. Takai S, *et al.* (2003) Effect of chymase inhibitor on vascular proliferation. *Jpn J Pharmacol.* 90 (3): 223-7.
2. Caughey GH, *et al.* (1993) The human mast cell chymase gene (CMA1): mapping to the cathepsin G/granzyme gene cluster and lineage-restricted expression. *Genomics.* 15 (3): 614-20.
3. Urata H, *et al.* (1991) Cloning of the gene and cDNA for human heart chymase. *J Biol Chem.* 266 (26): 17173-9.

Manufactured By Sino Biological Inc., FOR RESEARCH USE ONLY. NOT FOR USE IN HUMANS.

For US Customer: Fax: 267-657-0217 ● Tel: 215-583-7898

Global Customer: Fax :+86-10-5862-8288 ● Tel:+86-400-890-9989 ● <http://www.sinobiological.com>