

Human ENO1 / Enolase 1 / alpha-enolase Protein (His Tag)

Catalog Number: 11554-H07E



Sino Biological
Biological Solution Specialist

General Information

Gene Name Synonym:

ENO1L1; HEL-S-17; MPB1; NNE; PPH

Protein Construction:

A DNA sequence encoding the human ENO1 (P06733-1) (Met 1-Lys 434) was expressed, with a polyhistidine tag at the N-terminus.

Source: Human

Expression Host: E. coli

QC Testing

Purity: > 95 % as determined by SDS-PAGE

Endotoxin:

Please contact us for more information.

Stability:

Samples are stable for up to twelve months from date of receipt at -70 °C

Predicted N terminal: Met

Molecular Mass:

The recombinant human ENO1 consisting of 450 amino acids and has a calculated molecular mass of 49.3 kDa. It migrates as an 47 kDa band in SDS-PAGE under reducing conditions as predicted.

Formulation:

Lyophilized from sterile 20mM Tris, 10% glycerol, pH 8.5

Normally 5 % - 8 % trehalose, mannitol and 0.01% Tween80 are added as protectants before lyophilization. Specific concentrations are included in the hardcopy of COA. Please contact us for any concerns or special requirements.

Usage Guide

Storage:

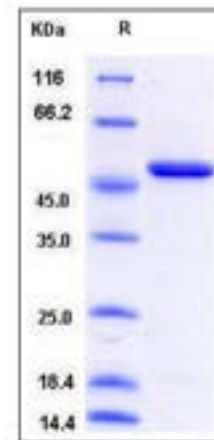
Store it under sterile conditions at -20°C to -80°C upon receiving. Recommend to aliquot the protein into smaller quantities for optimal storage.

Avoid repeated freeze-thaw cycles.

Reconstitution:

Detailed reconstitution instructions are sent along with the products.

SDS-PAGE:



References

- 1.Capello M, *et al.* (2011) α -Enolase: a promising therapeutic and diagnostic tumor target. FEBS J. 278(7): 1064-74.
- 2.Kang HJ, *et al.* (2008) Structure of human alpha-enolase (hENO1), a multifunctional glycolytic enzyme. Acta Crystallogr D Biol Crystallogr. 64(Pt 6): 651-7.
- 3.Lopez-Aleman R, *et al.* (2005) Alpha-enolase plasminogen receptor in myogenesis. Front Biosci. 10: 30-6.

Manufactured By Sino Biological Inc., FOR RESEARCH USE ONLY. NOT FOR USE IN HUMANS.

For US Customer: Fax: 267-657-0217 • Tel: 215-583-7898

Global Customer: Fax :+86-10-5862-8288 • Tel:+86-400-890-9989 • <http://www.sinobiological.com>