

# HIV-1 gp140 Protein (group M, subtype CRF07\_BC) (Fc Tag)

Catalog Number: 11677-V02H



Sino Biological  
Biological Solution Specialist

## General Information

### Gene Name Synonym:

gp140

### Protein Construction:

A DNA sequence encoding the HIV-1 envelope glycoprotein gp160 extracellular domain (Ala 29-Ser 661), termed as gp140, was fused with the Fc region of human IgG1 at the C-terminus and a signal peptide at the N-terminus.

**Source:** HIV

**Expression Host:** HEK293 Cells

## QC Testing

**Purity:** > 95 % as determined by SDS-PAGE

### Bio Activity:

Using the Octet RED System, the affinity constant (Kd) of gp140-Fc bound to human CD4 is 0.3  $\mu$ M.

### Endotoxin:

< 1.0 EU per  $\mu$ g of the protein as determined by the LAL method

### Stability:

Samples are stable for up to twelve months from date of receipt at -70 °C

**Predicted N terminal:** Ala 29

### Molecular Mass:

The recombinant HIV-1 gp140 consists of 874 amino acids after removal of the signal peptide and has a predicted molecular mass of 98 kDa. The apparent molecular mass of the recombinant protein is approximately 210-230 kDa in SDS-PAGE under reducing conditions.

### Formulation:

Lyophilized from sterile PBS, pH 7.4

Normally 5 % - 8 % trehalose, mannitol and 0.01% Tween80 are added as protectants before lyophilization. Specific concentrations are included in the hardcopy of COA. Please contact us for any concerns or special requirements.

## Usage Guide

### Storage:

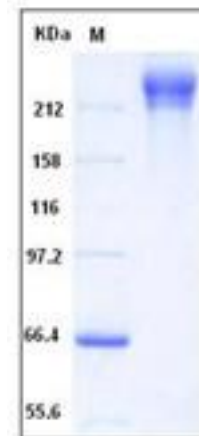
Store it under sterile conditions at -20°C to -80°C upon receiving. Recommend to aliquot the protein into smaller quantities for optimal storage.

**Avoid repeated freeze-thaw cycles.**

### Reconstitution:

Detailed reconstitution instructions are sent along with the products.

## SDS-PAGE:



**Manufactured By Sino Biological Inc., FOR RESEARCH USE ONLY. NOT FOR USE IN HUMANS.**

**For US Customer:** Fax: 267-657-0217 • Tel: 215-583-7898

**Global Customer:** Fax :+86-10-5862-8288 • Tel:+86-400-890-9989 • <http://www.sinobiological.com>