

Human SETD8 / PR-Set7 Protein



Sino Biological
Biological Solution Specialist

Catalog Number: 11726-HNCE

General Information

Gene Name Synonym:

KMT5A; PR-Set7; SET07; SET8

Protein Construction:

A DNA sequence encoding the human SETD8 (NP_065115.3) (Lys 195-His 352) was expressed and purified, with two additional amino acids (Gly & Pro) at the N-terminus.

Source: Human

Expression Host: E. coli

QC Testing

Purity: > 98 % as determined by SDS-PAGE

Endotoxin:

Please contact us for more information.

Stability:

Samples are stable for up to twelve months from date of receipt at -70 °C

Predicted N terminal: Gly

Molecular Mass:

The recombinant human SETD8 comprises 160 amino acids and has a predicted molecular mass of 18.2 kDa. It migrates as an approximately 18 kDa band in SDS-PAGE under reducing conditions as predicted.

Formulation:

Lyophilized from sterile 20mM Tris, 100mM NaCl, pH 8.0

Normally 5 % - 8 % trehalose, mannitol and 0.01% Tween80 are added as protectants before lyophilization. Specific concentrations are included in the hardcopy of COA. Please contact us for any concerns or special requirements.

Usage Guide

Storage:

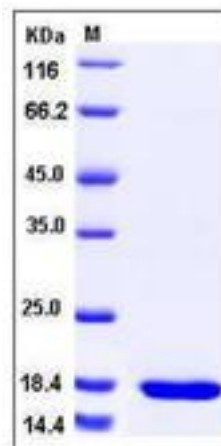
Store it under sterile conditions at -20°C to -80°C upon receiving. Recommend to aliquot the protein into smaller quantities for optimal storage.

Avoid repeated freeze-thaw cycles.

Reconstitution:

Detailed reconstitution instructions are sent along with the products.

SDS-PAGE:



Manufactured By Sino Biological Inc., FOR RESEARCH USE ONLY. NOT FOR USE IN HUMANS.

For US Customer: Fax: 267-657-0217 • Tel: 215-583-7898

Global Customer: Fax :+86-10-5862-8288 • Tel:+86-400-890-9989 • <http://www.sinobiological.com>