

# SETD8 / PR-Set7 Antibody, Rabbit PAb, Antigen Affinity Purified



Sino Biological  
Biological Solution Specialist

Catalog Number: 11726-T48

GENERAL INFORMATION	
Immunogen:	Recombinant Human SETD8 / PR-Set7 Protein (Catalog#11726-HNCE)
Preparation	Produced in rabbits immunized with purified, recombinant Human SETD8 / PR-Set7 (rh SETD8 / PR-Set7; Catalog#11726-HNCE; NP_065115.3; Lys195-His352). SETD8 / PR-Set7 specific IgG was purified by Human SETD8 / PR-Set7 affinity chromatography.
Ig Type:	Rabbit IgG
Specificity:	Human SETD8 / PR-Set7
Formulation:	0.2 µm filtered solution in PBS
Storage:	This antibody can be stored at 2°C-8°C for one month without detectable loss of activity. Antibody products are stable for twelve months from date of receipt when stored at -20°C to -80°C. Preservative-Free. Sodium azide is recommended to avoid contamination (final concentration 0.05%-0.1%). It is toxic to cells and should be disposed of properly. Avoid repeated freeze-thaw cycles.
APPLICATIONS	
Applications:	WB,ELISA
RECOMMENDED CONCENTRATION	
Western Blot	WB: 1:500-1:1000
ELISA	ELISA: 1:25000-1:50000 This antibody can be used at 1:25000-1:50000 with the appropriate secondary reagents to detect Human SETD8 / PR-Set7.

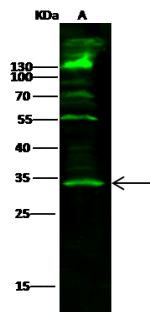
**Please Note: Optimal concentrations/dilutions should be determined by the end user.**

# SETD8 / PR-Set7 Antibody, Rabbit PAb, Antigen Affinity Purified



Sino Biological  
Biological Solution Specialist

Catalog Number: 11726-T48



Anti-SETD8 rabbit polyclonal antibody at 1:500 dilution

Lane A: 293 Whole Cell Lysate

Lysates/proteins at 30 µg per lane.

Secondary

Goat Anti- Rabbit IgG H&L (Dylight 800) at 1/10000 dilution.

Developed using the Odyssey technique.

Performed under reducing conditions.

Predicted band size: 43 kDa

Observed band size: 34 kDa

(We are unsure as to the identity of these extra bands.)