

Human Semaphorin 4D / SEMA4D / CD100 Protein (His Tag)

Catalog Number: 11825-H08H



Sino Biological
Biological Solution Specialist

General Information

Gene Name Synonym:

C9orf164; CD100; coll-4; M-sema-G; SEMAJ

Protein Construction:

A DNA sequence encoding the human SEMA4D isoform 1 (Q92854-1) extracellular domain (Met 1-Arg 734) was expressed, with a polyhistidine tag at the C-terminus.

Source: Human

Expression Host: HEK293 Cells

QC Testing

Purity: > 92 % as determined by SDS-PAGE

Bio Activity:

Measured by its binding ability in a functional ELISA. Immobilized human SEMA4D-His at 10 µg/ml (100 µl/well) can bind mouse PTPRC-Fc (Cat:50713-M02H1) with a linear range of 0.625-5 µg/ml.

Endotoxin:

< 1.0 EU per µg of the protein as determined by the LAL method

Stability:

Samples are stable for up to twelve months from date of receipt at -70 °C

Predicted N terminal: Met 22

Molecular Mass:

The recombinant human SEMA4D consists of 725 amino acids and predicts a molecular mass of 80.7 kDa. In SDS-PAGE under reducing conditions, the apparent molecular mass of rhSEMA4D is approximately 110 kDa due to glycosylation.

Formulation:

Lyophilized from sterile PBS, pH 7.4

Normally 5 % - 8 % trehalose, mannitol and 0.01% Tween80 are added as protectants before lyophilization. Specific concentrations are included in the hardcopy of COA. Please contact us for any concerns or special requirements.

Usage Guide

Storage:

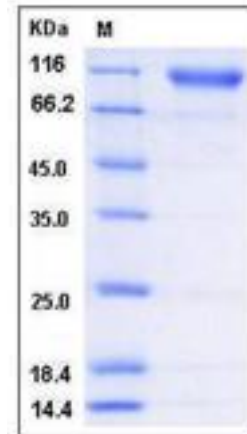
Store it under sterile conditions at -20°C to -80°C upon receiving. Recommend to aliquot the protein into smaller quantities for optimal storage.

Avoid repeated freeze-thaw cycles.

Reconstitution:

Detailed reconstitution instructions are sent along with the products.

SDS-PAGE:



Manufactured By Sino Biological Inc., FOR RESEARCH USE ONLY. NOT FOR USE IN HUMANS.

For US Customer: Fax: 267-657-0217 • Tel: 215-583-7898

Global Customer: Fax :+86-10-5862-8288 • Tel:+86-400-890-9989 • <http://www.sinobiological.com>