

# C1QBP / HABP1 Antibody, Mouse MAb



Sino Biological  
Biological Solution Specialist

Catalog Number: 11874-MM09

## GENERAL INFORMATION

Immunogen:	Recombinant Human C1QBP / HABP1 protein (Catalog#11874-H08E)
Preparation	This antibody was produced from a hybridoma resulting from the fusion of a mouse myeloma with B cells obtained from a mouse immunized with purified, recombinant Human C1QBP / HABP1 (rh C1QBP / HABP1; Catalog#11874-H08E; NP_001203.1; His75-Gln282). The IgG fraction of the cell culture supernatant was purified by Protein A affinity chromatography.
Ig Type:	Mouse IgG1
Clone ID:	09
Specificity:	Human C1QBP / HABP1
Formulation:	0.2 µm filtered solution in PBS
Storage:	This antibody can be stored at 2°C-8°C for one month without detectable loss of activity. Antibody products are stable for twelve months from date of receipt when stored at -20°C to -80°C. Preservative-Free. Avoid repeated freeze-thaw cycles.
Alternative Names:	gC1Q-R,GC1QBP,gC1qR,HABP1,p32,SF2p32

## APPLICATIONS

Applications:	FCM,ICC/IF
---------------	------------

## RECOMMENDED CONCENTRATION

ICC/IF	ICC/IF: 1:20-1:100
Flow Cytometry	FCM: 1:25-1:100

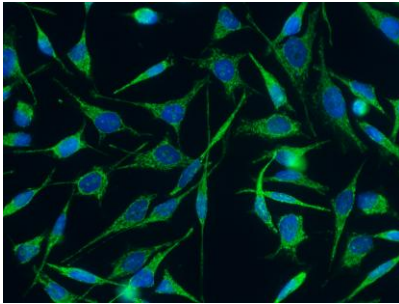
**Please Note: Optimal concentrations/dilutions should be determined by the end user.**

# C1QBP / HABP1 Antibody, Mouse MAb

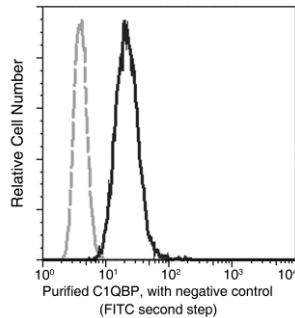


Sino Biological  
Biological Solution Specialist

Catalog Number: 11874-MM09



Immunofluorescence staining of Human C1QBP in HeLa cells. Cells were fixed with 4% PFA, permeabilized with 0.5% Triton X-100 in PBS, blocked with 10% serum, and incubated with Mouse anti-Human C1QBP monoclonal antibody (1:60) at 37°C 1 hour. Then cells were stained with the Alexa Fluor® 488-conjugated Goat Anti-mouse IgG secondary antibody (green). Positive staining was localized to cytoplasm.



Flow cytometric analysis of Human C1QBP expression on HeLa cells. The cells were treated according to manufacturer's manual (BD Pharmingen™ Cat. No. 554714), stained with purified anti-Human C1QBP, then a FITC-conjugated second step antibody. The fluorescence histograms were derived from gated events with the forward and side light-scatter characteristics of intact cells.

Flow cytometry was performed on a BD FACSCalibur flow cytometry system. Please refer to [www.sinobiological.com/Flow-Cytometry-FACS-Protocols-a-750.html](http://www.sinobiological.com/Flow-Cytometry-FACS-Protocols-a-750.html) for technical protocols.