

Human Siglec-2 / CD22 Protein (His Tag) (PE conjugated)

Catalog Number: 11958-H08H-P

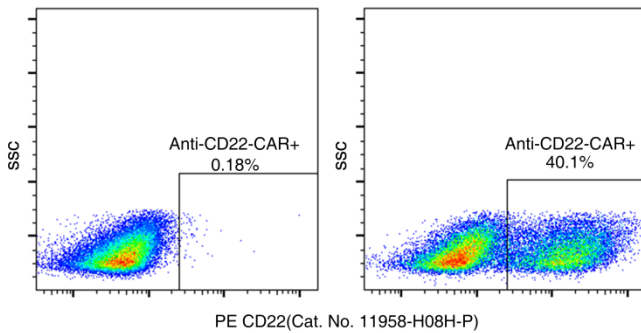


Sino Biological
Biological Solution Specialist

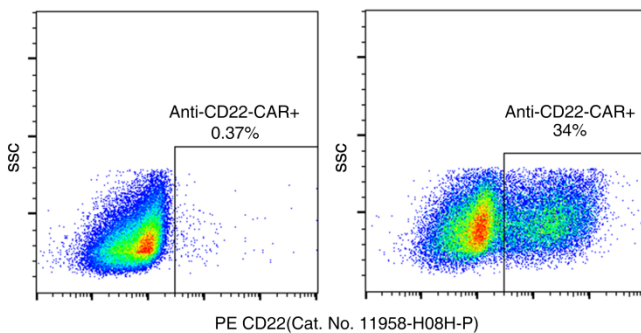
General Information

Expression System:	HEK293 Cells
Preparation:	Recombinant human CD22 (isoform-beta, P20273-1, extracellular domain, Met 1-Arg 687) are conjugated with PE under optimum conditions, the unreacted PE was removed.
Labeling Ratio:	The PE to protein molar ratio is 0.1-1
Formulation:	Aqueous solution containing 0.5% BSA and 0.03%Proclin 300
Concentration:	10 µl/Test, 0.1 mg/ml
Storage:	This reagent is stable for 6 months from date of receipt when stored at 2℃ - 8℃. Protected from prolonged exposure to light. Do not freeze !
Form & Shipping :	Liquid. Shipping at ambient temperature.
Usage:	The 5×10E5 cells are suspended in 50 µL washing buffer (1 X PBS + 1% BSA), add 10 µL Protein L-PE, incubate for 45 min at 4℃ from light, then wash 2 times with wash buffer. Analyze by flow cytometry immediately.

Test results



Flow cytometric analysis of anti-CD22 CAR expression. Human T cells were lentivirally transduced with anti-CD22 CAR. Flow cytometric analysis was performed with PE-conjugated recombinant human CD22 (Cat. No.11958-H08H-P). Non-transduced T cells were used as a control (left).



Flow cytometric analysis of anti-CD22 CAR expression. 293 cells were lentivirally transduced with anti-CD22 CAR. Flow cytometric analysis was performed with PE-conjugated recombinant human CD22 (Cat. No.11958-H08H-P). Non-transduced 293 cells were used as a control (left).

Manufactured By Sino Biological Inc., FOR RESEARCH USE ONLY. NOT FOR USE IN HUMANS.

Tel: 215-583-7898 (USA), +86-400-890-9989 (Global)

<http://www.sinobiological.com>