

CD22/Siglec-2 Antibody, Rabbit PAb, Antigen Affinity Purified



Sino Biological
Biological Solution Specialist

Catalog Number: 11958-T26

GENERAL INFORMATION

Immunogen:	Recombinant Human CD22/Siglec-2 Protein (Catalog#11958-H08H)
Preparation	Produced in rabbits immunized with purified, recombinant Human CD22/Siglec-2 (rh CD22/Siglec-2; Catalog#11958-H08H; P20273-1; Met1-Arg687). CD22/Siglec-2 specific IgG was purified by Human CD22/Siglec-2 affinity chromatography.
Ig Type:	Rabbit IgG
Specificity:	Human CD22/Siglec-2
Formulation:	0.2 µm filtered solution in PBS
Storage:	This antibody can be stored at 2°C-8°C for one month without detectable loss of activity. Antibody products are stable for twelve months from date of receipt when stored at -20°C to -80°C. Preservative-Free. Avoid repeated freeze-thaw cycles.
Alternative Names:	SIGLEC-2, SIGLEC2

APPLICATIONS

Applications:	ELISA, IHC-P, ICC/IF
----------------------	----------------------

RECOMMENDED CONCENTRATION

IHC-P	IHC-P: 1:2500-1:10000
ICC/IF	ICC/IF: 1:300-1:10000
ELISA	ELISA: 1:5000-1:10000 This antibody can be used at 1:5000-1:10000 with the appropriate secondary reagents to detect Human CD22/Siglec-2.

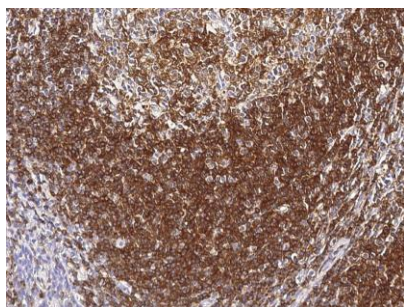
Please Note: Optimal concentrations/dilutions should be determined by the end user.

CD22/Siglec-2 Antibody, Rabbit PAb, Antigen Affinity Purified

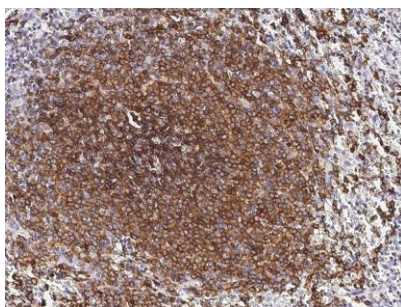
Catalog Number: 11958-T26



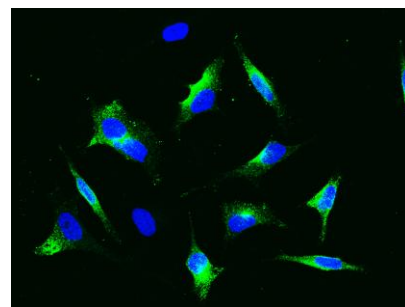
Sino Biological
Biological Solution Specialist



Immunohistochemical staining of human CD22 in human tonsil with rabbit polyclonal antibody (1:5000, formalin-fixed paraffin embedded sections).



Immunohistochemical staining of human CD22 in human spleen with rabbit polyclonal antibody (1:5000, formalin-fixed paraffin embedded sections).



Immunofluorescence staining of CD22 in HeLa cells. Cells were fixed with 4% PFA, permeabilized with 0.3% Triton X-100 in PBS, blocked with 10% serum, and incubated with rabbit anti-human CD22 polyclonal antibody (1:1000) at 4°C overnight. Then cells were stained with the Alexa Fluor®488-conjugated Goat Anti-rabbit IgG secondary antibody (green) and counterstained with DAPI (blue). Positive staining was localized to cell membrane and cytoplasm.