

Human IDH1 Protein (His Tag)

Catalog Number: 12055-H08E



Sino Biological
Biological Solution Specialist

General Information

Gene Name Synonym:

HEL-216; HEL-S-26; IDCD; IDH; IDP; IDPC; PICD

Protein Construction:

A DNA sequence encoding the human IDH1 (O75874) (Met 1-Leu 414) was fused with a polyhistidine tag at the C-terminus.

Source: Human

Expression Host: E. coli

QC Testing

Purity: > 95 % as determined by SDS-PAGE

Endotoxin:

Please contact us for more information.

Stability:

Samples are stable for up to twelve months from date of receipt at -70 °C

Predicted N terminal: Met 1

Molecular Mass:

The recombinant human IDH1 consisting of 424 amino acids and has a calculated molecular mass of 48 kDa. It migrates as an approximately 43 kDa band in SDS-PAGE under reducing conditions.

Formulation:

Lyophilized from sterile 50mM Tris, 200mM NaCl, 1mM DTT, 10% Glycerol, pH 7.5

Normally 5 % - 8 % trehalose, mannitol and 0.01% Tween80 are added as protectants before lyophilization. Specific concentrations are included in the hardcopy of COA. Please contact us for any concerns or special requirements.

Usage Guide

Storage:

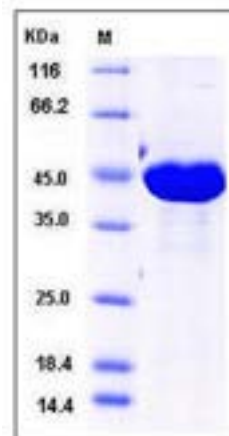
Store it under sterile conditions at -20°C to -80°C upon receiving. Recommend to aliquot the protein into smaller quantities for optimal storage.

Avoid repeated freeze-thaw cycles.

Reconstitution:

Detailed reconstitution instructions are sent along with the products.

SDS-PAGE:



References

- 1.Takano S, *et al.* (2011) Detection of IDH1 mutation in human gliomas: comparison of immunohistochemistry and sequencing. *Brain Tumor Pathol.* 28(2): 115-23.
- 2.Geisbrecht BV, *et al.* (1999) The human PICD gene encodes a cytoplasmic and peroxisomal NADP(+)-dependent isocitrate dehydrogenase. *J Biol Chem.* 274(43): 30527-30533.
- 3.Nekrutenko A, *et al.* (1998) Cytosolic isocitrate dehydrogenase in humans, mice, and voles and phylogenetic analysis of the enzyme family. *Mol Biol Evol.* 15(12): 1674-1684.

Manufactured By Sino Biological Inc., FOR RESEARCH USE ONLY. NOT FOR USE IN HUMANS.

For US Customer: Fax: 267-657-0217 • Tel: 215-583-7898

Global Customer: Fax :+86-10-5862-8288 • Tel:+86-400-890-9989 • <http://www.sinobiological.com>