

Human S100A14 / S114 Protein (His Tag)



Sino Biological
Biological Solution Specialist

Catalog Number: 12251-H07E

General Information

Gene Name Synonym:

BCMP84; S100A15

Protein Construction:

A DNA sequence encoding the native human S100A14 (NP_065723.1) (Gly 2-His 104) was expressed, with a polyhistidine tag at the N-terminus.

Source: Human

Expression Host: E. coli

QC Testing

Purity: > 85 % as determined by SDS-PAGE

Endotoxin:

Please contact us for more information.

Stability:

Samples are stable for up to twelve months from date of receipt at -70 °C

Predicted N terminal: Met

Molecular Mass:

The recombinant human S100A14 consisting of 114 amino acids and migrates as an 13 kDa band in SDS-PAGE under reducing conditions as predicted.

Formulation:

Lyophilized from sterile 50mM Tris, 20% glycerol, pH 7.5

Normally 5 % - 8 % trehalose, mannitol and 0.01% Tween80 are added as protectants before lyophilization. Specific concentrations are included in the hardcopy of COA. Please contact us for any concerns or special requirements.

Usage Guide

Storage:

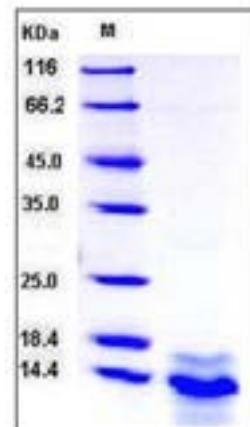
Store it under sterile conditions at -20°C to -80°C upon receiving. Recommend to aliquot the protein into smaller quantities for optimal storage.

Avoid repeated freeze-thaw cycles.

Reconstitution:

Detailed reconstitution instructions are sent along with the products.

SDS-PAGE:



Protein Description

S100 proteins are a family of low molecular weight proteins found in vertebrates characterized by two EF-hand calcium-binding motifs. There are at least 21 different S100 proteins, and the name is derived from the fact that the protein is 100% soluble in ammonium sulfate at neutral pH. Most S100 proteins are disulfide-linked homodimers, and are normally present in cells derived from the neural crest, chondrocytes, macrophages, dendritic cells, etc. S100 proteins have been implicated in a variety of intracellular and extracellular functions. They are involved in regulation of protein phosphorylation, transcription factors, the dynamics of cytoskeleton constituents, enzyme activities, cell growth and differentiation, and the inflammatory response. Protein S100-A14, also known as S100 calcium-binding protein A14, S114 and S100A14, is a cytoplasmic protein which belongs to the S-100 family. It is expressed at highest levels in colon and at moderate levels in thymus, kidney, liver, small intestine, and lung. Low expression in heart and no expression is seen in brain, skeletal muscle, spleen, placenta and peripheral blood leukocytes.

References

1. Pietas A., et al., 2002, Genomics 79: 513-22.
2. Donato, R. et al., 2003, Microsc. Res. Tech. 60 (6): 540-51.
3. Gebhardt, C. et al., 2006, Biochem Pharmacol. 72 (11):1622-31.

Manufactured By Sino Biological Inc., FOR RESEARCH USE ONLY. NOT FOR USE IN HUMANS.

For US Customer: Fax: 267-657-0217 • Tel: 215-583-7898

Global Customer: Fax: +86-10-5862-8288 • Tel: +86-400-890-9989 • <http://www.sinobiological.com>