

# CD164 Antibody (FITC), Rabbit MAb



Sino Biological  
Biological Solution Specialist

Catalog Number: 12260-R006-F

EliteRmab® is a registered trademark of Sino Biological Inc.

GENERAL INFORMATION	
Immunogen:	Recombinant Human CD164 Protein (Catalog#12260-H08H)
Reagents:	FITC-conjugated Rabbit monoclonal antibody
Preparation	This antibody was obtained from a rabbit immunized with purified, recombinant Human CD164 (rh CD164; Catalog#12260-H08H; Q04900-1; Met1-Asp162) and conjugated with FITC under optimum conditions, the unreacted FITC was removed.
Ig Type:	Rabbit IgG
Clone ID:	006
Specificity:	Human CD164
Concentration:	10 µl/Test, 0.1 mg/ml
Formulation:	Aqueous solution containing 0.5% BSA and 0.09% sodium azide
Storage:	This antibody is stable for 12 months from date of receipt when stored at 2°C-8°C. Protected from prolonged exposure to light. Do not freeze! Sodium azide is toxic to cells and should be disposed of properly. Flush with large volumes of water during disposal.
APPLICATIONS	
Applications:	FCM
RECOMMENDED CONCENTRATION	

**Please Note: Optimal concentrations/dilutions should be determined by the end user.**

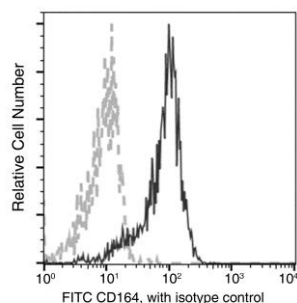
# CD164 Antibody (FITC), Rabbit MAb



Sino Biological  
Biological Solution Specialist

Catalog Number: 12260-R006-F

EliteRmab® is a registered trademark of Sino Biological Inc.



Flow cytometric analysis of Human CD164 expression on human whole blood monocytes. Cells were stained with FITC-conjugated anti-Human CD164. The fluorescence histograms were derived from gated events with the forward and side light-scatter characteristics of viable monocytes.

Flow cytometry was performed on a BD FACSCalibur flow cytometry system. Please refer to [www.sinobiological.com/Flow-Cytometry-FACS-Protocols-a-750.html](http://www.sinobiological.com/Flow-Cytometry-FACS-Protocols-a-750.html) for technical protocols.